

# RNAV (GPS) RWY 9

WILSON INDUSTRIAL AIR CENTER (W03)

APP CRS	Rwy Idg	<b>4500</b>
<b>095°</b>	TDZE	<b>161</b>
	Apt Elev	<b>161</b>

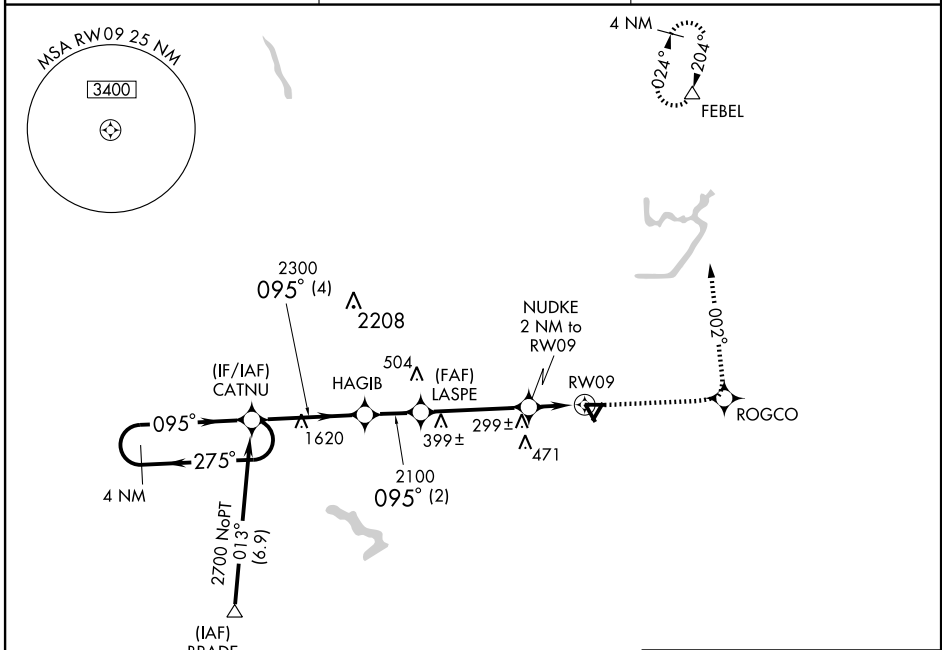
**NA** DME/DME RNP-0.3 NA. Procedure NA at night. Visibility reduction by helicopters NA. Obtain local altimeter setting on CTAF; when not received use Rocky Mount altimeter setting.

**MISSED APPROACH:** Climb to 2500 direct ROGCO then left turn via 002° track to FEBEL and hold.

WASHINGTON CENTER  
**118.475 279.65**

UNICOM  
**123.0 (CTAF)**

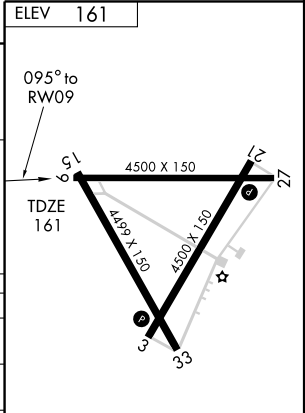
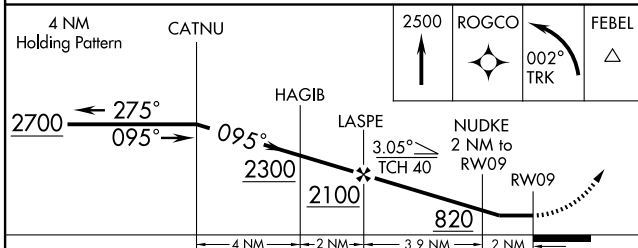
GCO  
**121.725**



SE-2, 22 OCT 2009 to 19 NOV 2009

SE-2, 22 OCT 2009 to 19 NOV 2009

ELEV	<b>161</b>
------	------------



CATEGORY	A	B	C	D
RNAV MDA	560-1	399 (400-1)		560-1¼ 399 (400-1¼)
CIRCLING	660-1	499 (500-1)	660-1½ 499 (500-1½)	720-2 559 (600-2)
ROCKY MOUNT ALTIMETER SETTING MINIMUMS				
RNAV MDA	580-1	419 (500-1)	580-1¼	419 (500-1¼)
CIRCLING	680-1	519 (600-1)	680-1½	519 (600-1½)
			720-2	559 (600-2)

REIL Rwy 3 and 21  
MIRL Rwy 3-21