

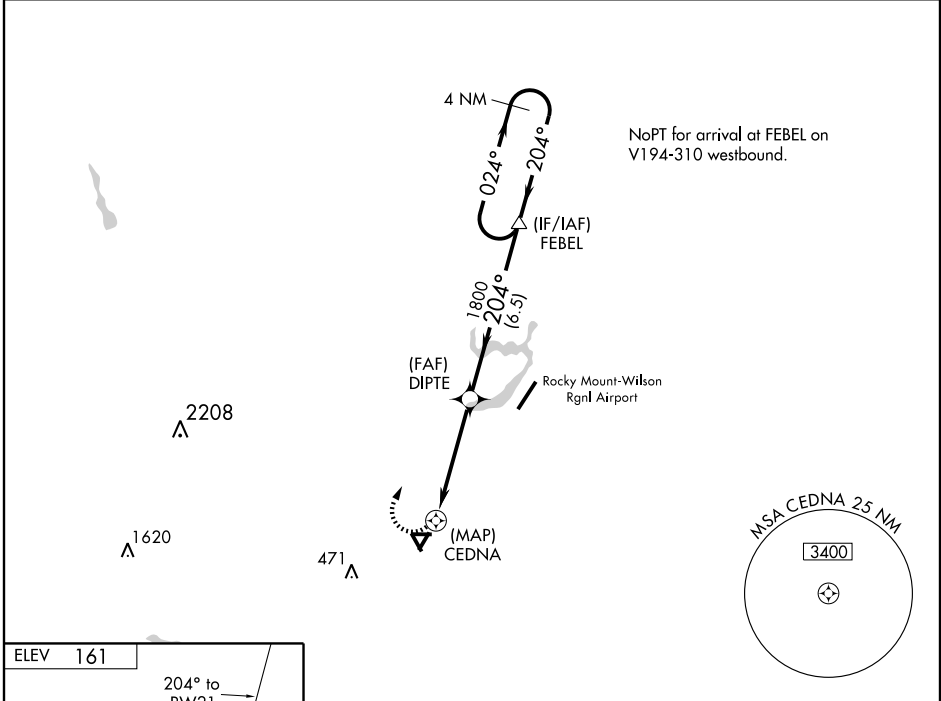
RNAV (GPS) RWY 21

WILSON INDUSTRIAL AIR CENTER (W03)

APP CRS 204°	Rwy Idg 4500
	TDZE 159
	Apt Elev 161

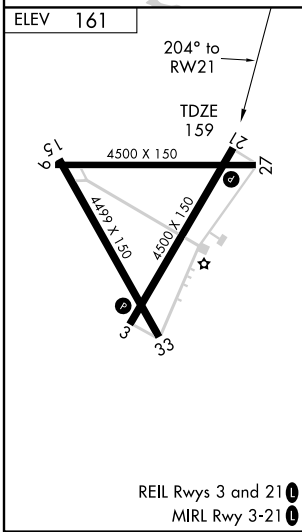
<p>▽ Obtain local altimeter setting on CTAF; when not received use Rocky Mount-Wilson Rgnl altimeter setting. DME/DME RNP-0.3 NA.</p> <p>△ NA Circling NA at night to Rwy 9, 27, 15, 33.</p>	<p>MISSED APPROACH: Climbing right turn to 2500 direct FEBEL WP and hold.</p>
--	--

<p>WASHINGTON CENTER 118.475 279.65</p>	<p>UNICOM 123.0 (CTAF) 0</p>	<p>GCO 121.725</p>
--	---	-------------------------------



SE-2, 22 OCT 2009 to 19 NOV 2009

SE-2, 22 OCT 2009 to 19 NOV 2009



	2500	FEBEL	4 NM Holding Pattern	
		△		
		DIPE	2500	
		CEDNA	1800	
	0.5	4.5 NM	6.5 NM	
		3.03°	TCH 40	
			VGSI and descent angles not coincident.	
CATEGORY	A	B	C	D
LNAV MDA	560-1	401 (400-1)	560-1¼	401 (400-1¼)
CIRCLING	660-1	499 (500-1)	660-1½ 499 (500-1½)	720-2 559 (600-2)
ROCKY MOUNT-WILSON RGNL ALTIMETER SETTING MINIMUMS				
LNAV MDA	560-1	401 (400-1)	560-1¼	401 (400-1¼)
CIRCLING	680-1	519 (600-1)	680-1½ 519 (600-1½)	720-2 559 (600-2)