

# RNAV (GPS) RWY 15

WILSON INDUSTRIAL AIR CENTER (W03)

APP CRS	Rwy Idg	<b>4499</b>
<b>158°</b>	TDZE	<b>161</b>
	Apt Elev	<b>161</b>

**NA** DME/DME RNP-0.3 NA. Procedure NA at night. Visibility reduction by helicopters NA. Obtain local altimeter setting on CTAF; when not received use Rocky Mount altimeter setting.

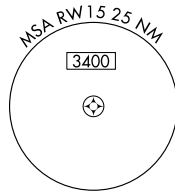
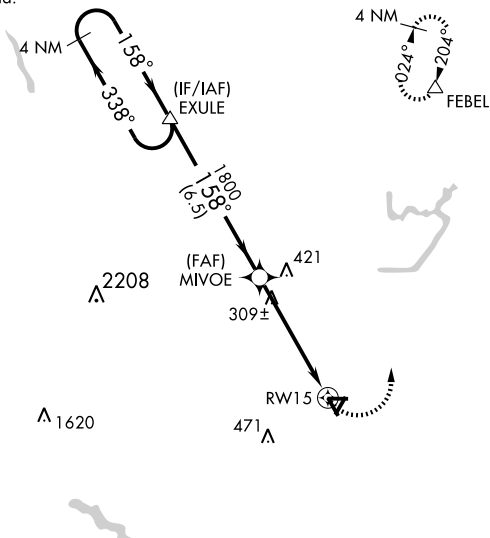
**MISSED APPROACH:** Climbing left turn to 2500 direct FEBEL and hold.

WASHINGTON CENTER  
**118.475 279.65**

UNICOM  
**123.0 (CTAF)**

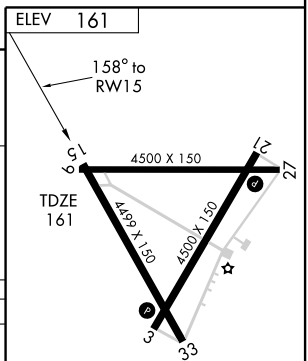
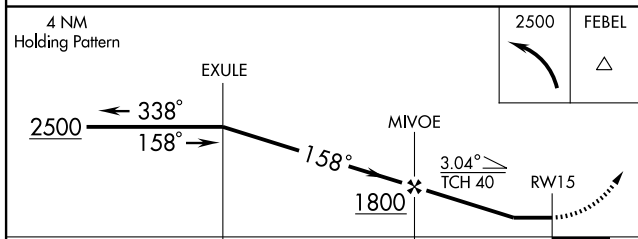
GCO  
**121.725**

NoPT for arrival at EXLUE on V194-310 eastbound.



SE-2, 22 OCT 2009 to 19 NOV 2009

SE-2, 22 OCT 2009 to 19 NOV 2009



CATEGORY	A	B	C	D
RNAV MDA	560-1 399 (400-1)			560-1¼ 399 (400-1¼)
CIRCLING	660-1	499 (500-1)	660-1½ 499 (500-1½)	720-2 559 (600-2)
ROCKY MOUNT ALTIMETER SETTING MINIMUMS				
RNAV MDA	580-1 419 (500-1)		580-1¼ 419 (500-1¼)	
CIRCLING	680-1	519 (600-1)	680-1½ 519 (600-1½)	720-2 559 (600-2)

REIL Rwy 3 and 21  
MIRL Rwy 3-21