

CARO, MICHIGAN

AL-6375 (FAA)

VOR/DME MBS <b>112.9</b> Chan <b>76</b>	APP CRS <b>102°</b>	Rwy Idg TDZE Apt Elev	<b>N/A</b> <b>N/A</b> <b>701</b>
---	------------------------	-----------------------------	--

# VOR/DME-A

CARO / TUSCOLA AREA (CFS)

**⚠** When local altimeter setting not received, use Saginaw/MBS Intl altimeter setting and increase all MDA 80 feet.

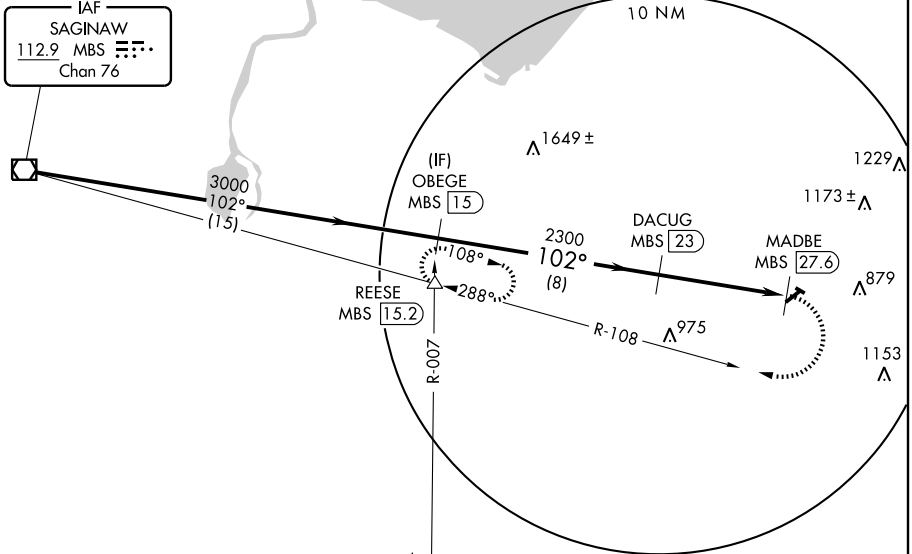
**MISSED APPROACH:** Climbing right turn to 3000 via heading 220° and MBS VOR/DME R-108 to REESE INT and hold.

AWOS-3  
**119.275**

SAGINAW APP CON\*  
**120.95 235.625**

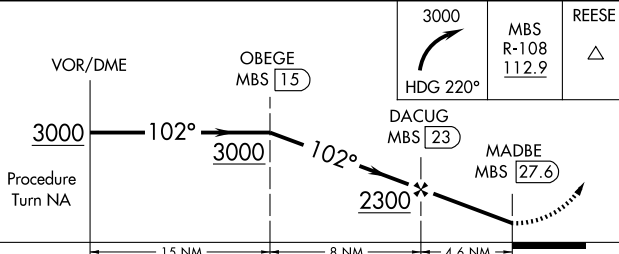
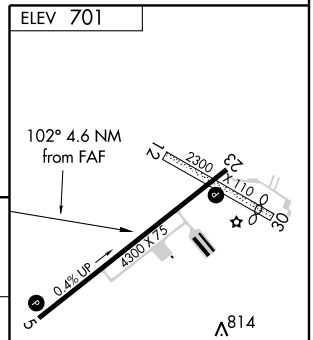
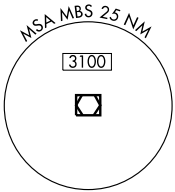
UNICOM  
**123.0 (CTAF)** **Ⓛ**

IAF  
SAGINAW  
**112.9** MBS **⋯⋯**  
Chan **76**



EC-1, 22 OCT 2009 to 19 NOV 2009

EC-1, 22 OCT 2009 to 19 NOV 2009



CATEGORY	A	B	C	D
CIRCLING	1220-1 519 (600-1)	1220-1¼ 519 (600-1¼)	NA	

ELEV 701

REIL Rwy 5 and 23 **Ⓛ**  
MIRL Rwy 5-23 **Ⓛ**

CARO, MICHIGAN  
Amdt 5 09239

43°28'N - 83°27'W

# VOR/DME-A

CARO / TUSCOLA AREA (CFS)