

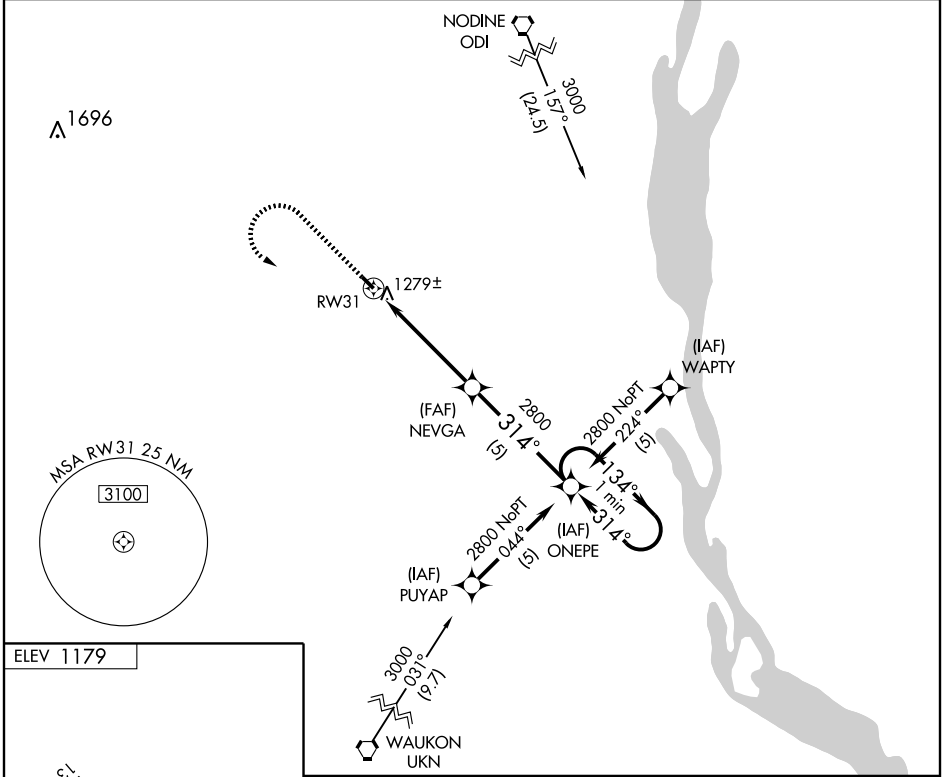
GPS RWY 31

CALEDONIA/HOUSTON COUNTY (CHU)

APP CRS 314°	Rwy Idg 3499
	TDZE 1179
	Apt Elev 1179

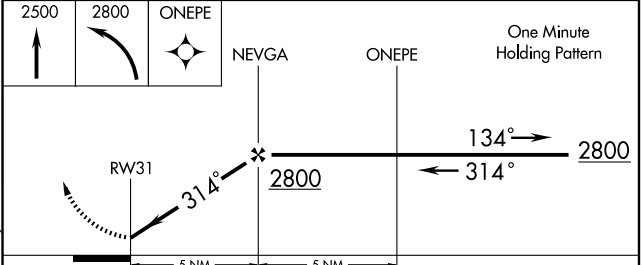
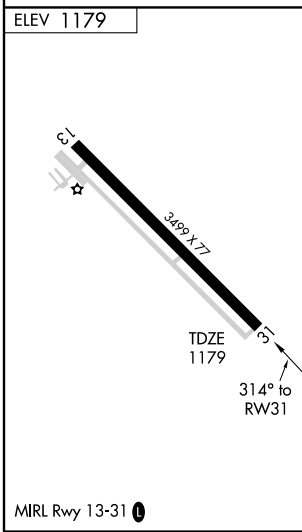
▲ NA Use La Crosse, WI altimeter setting. MISSED APPROACH: Climb to 2500 then climbing left turn to 2800 direct ONEPE WP and hold.

MINNEAPOLIS CENTER 128.6 363.0	CTAF 122.9 0
--	------------------------



NC-1, 22 OCT 2009 to 19 NOV 2009

NC-1, 22 OCT 2009 to 19 NOV 2009



CATEGORY	A	B	C	D
S-31	1660-1	481 (500-1)	1660-1¼ 481 (500-1¼)	NA
CIRCLING	1820-1	641 (700-1)	1820-1¾ 641 (700-1¾)	NA