

CLARKSVILLE, TENNESSEE

COPTER VOR RWY 22

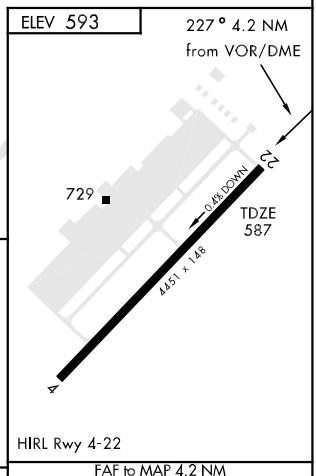
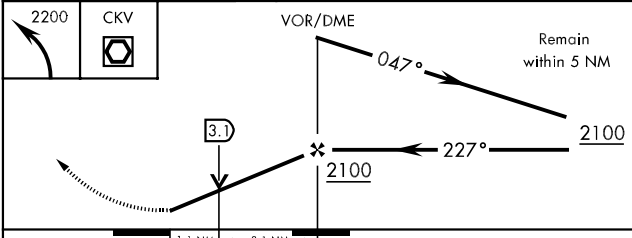
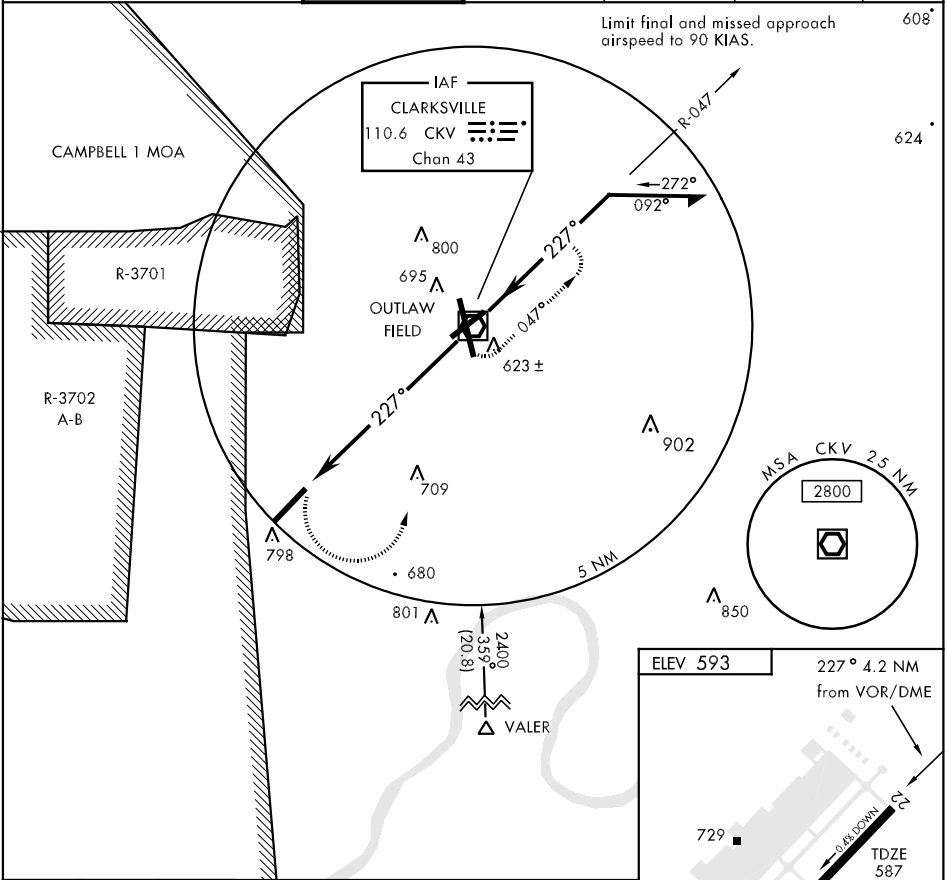
VOR/DME CKV 110.6 Chan 43	APCH CRS 227°	Rwy Idg 4451 TDZE Arprt Elev 593
---	-------------------------	--

AL-6373 [USA]

SABRE AHP (FORT CAMPBELL) (KEOD)

▼ When local altimeter setting not received, use Fort Campbell, KY altimeter setting.	MISSED APPROACH: Climbing left turn to 2200 direct CKV VOR/DME and hold.				
---	--	--	--	--	--

CAMPBELL APP CON 134.35 307.025	SABRE TOWER ★ 124.675 290.45	GND CON 142.975 267.3	CLNC DEL 237.6	EAGLE RADIO 265.5	ASR
---	--	---------------------------------	--------------------------	-----------------------------	-----



CATEGORY	COPTER					FAF to MAP 4.2 NM					
H-22	1000-½	413	(500-½)			Knots	45	60	75	90	105
						Min:Sec	5:36	4:12	3:22	2:48	2:24

CLARKSVILLE, TENNESSEE
Amdt 6 09183

36° 34'N-87° 29'W

SABRE AHP (FORT CAMPBELL) (KEOD)

COPTER VOR RWY 22

SE-1, 22 OCT 2009 to 19 NOV 2009

SE-1, 22 OCT 2009 to 19 NOV 2009