

CLARKSVILLE, TENNESSEE

COPTER RNAV (GPS) RWY 4

APCH CRS	Rwy Idg	4451
044°	TDZE	593
	Arpt Elev	593

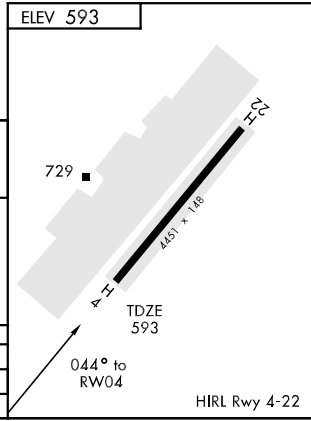
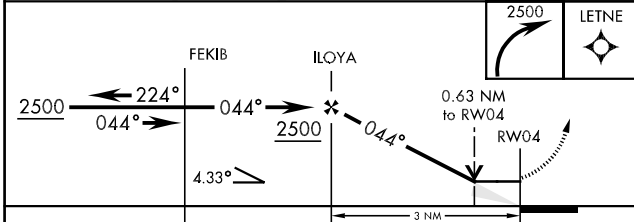
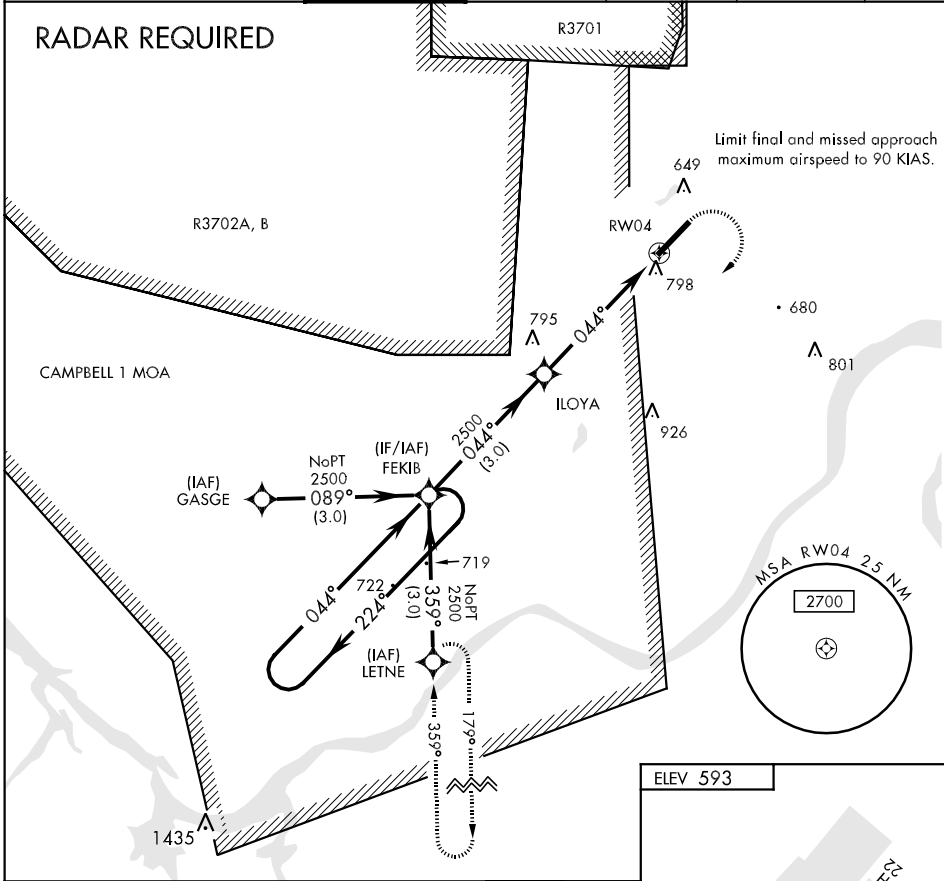
AL-6373 [USA]

SABRE AHP (FORT CAMPBELL) (KEOD)

When local altimeter setting not received, use Campbell AAF (Fort Campbell), KY altimeter setting.
DME/DME RNP-0.3 NA

MISSED APPROACH: Climbing right turn to 2500 direct LETNE and hold.

CAMPBELL APP CON	SABRE TOWER ★	GND CON	CLNC DEL	EAGLE RADIO	ASR
134.35 307.025	124.675 290.45	142.975 267.3	237.6	265.5	



CATEGORY	COPTER		
LNAV MDA	1120-½	527	(600-½)
ASR	1120-½	527	(600-½)

CLARKSVILLE, TENNESSEE

36°34'N-87°29'W

SABRE AHP (FORT CAMPBELL) (KEOD)

Amdt 1 08213

COPTER RNAV (GPS) RWY 4

SE-1, 22 OCT 2009 to 19 NOV 2009

SE-1, 22 OCT 2009 to 19 NOV 2009