

CLARKSVILLE, TENNESSEE

COPTER RNAV (GPS) RWY 22

APCH CRS	Rwy Idg	4451
224°	TDZE	587
	Arpt Elev	593

AL-6373 [USA]

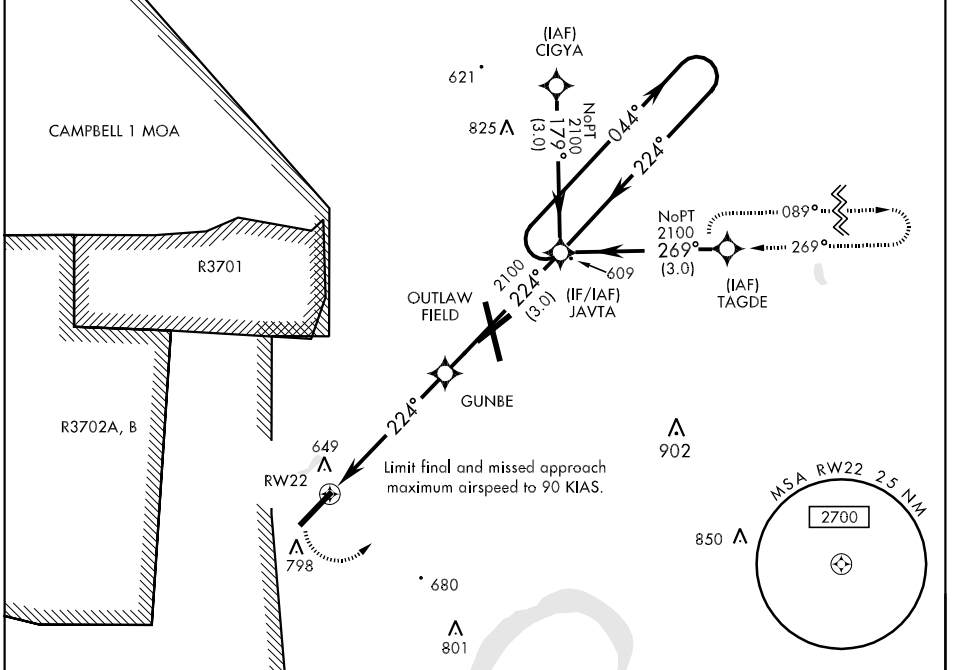
SABRE AHP (FORT CAMPBELL) (KEOD)

▼ When local altimeter setting not received, use Campbell AAF (Fort Campbell), KY altimeter setting.
DME/DME RNP-0.3 NA

MISSED APPROACH: Climbing left turn to 2100 direct TAGDE and hold.

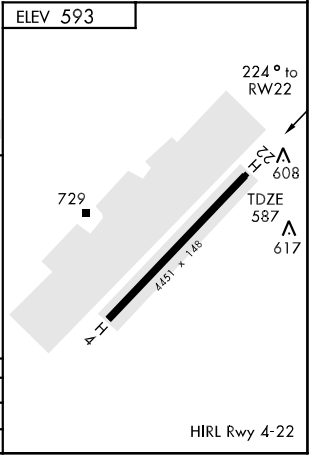
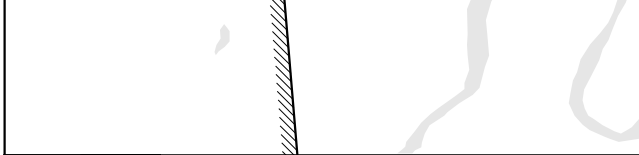
CAMPBELL APP CON	SABRE TOWER ★	GND CON	CLNC DEL	EAGLE RADIO	ASR
134.35 307.025	124.675 290.45	142.975 267.3	237.6	265.5	

RADAR REQUIRED



SE-1, 22 OCT 2009 to 19 NOV 2009

SE-1, 22 OCT 2009 to 19 NOV 2009



CATEGORY	COPTER		
LNAV MDA	1020-½	433	(500-½)
ASR	1000-½	413	(500-½)

CLARKSVILLE, TENNESSEE
Amdt 1 08213

36°34'N-87°29'W

SABRE AHP (FORT CAMPBELL) (KEOD)

COPTER RNAV (GPS) RWY 22

HIRL Rwy 4-22