

MANTEO, NORTH CAROLINA

AL-6372 (FAA)

| | | | |
|----------------|-------------|----------|-------------|
| VOR/DME RBX | APP CRS | Rwy Ldg | 3012 |
| 111.6 | 174° | TDZE | 14 |
| Chan 53 | | Apt Elev | 14 |

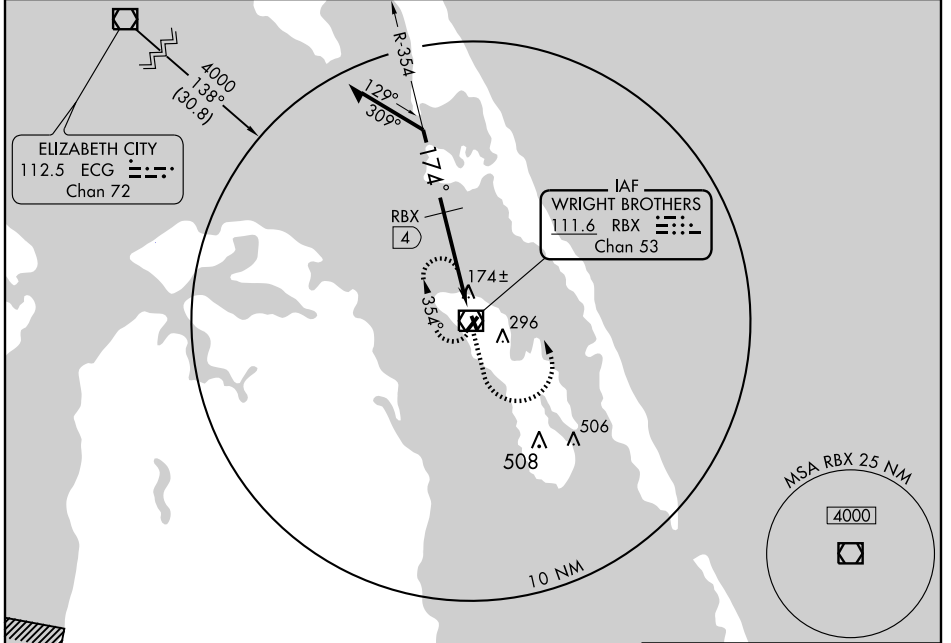
VOR RWY 17

MANTEO/ DARE COUNTY RGNL (MQI)

▽
▲ NA

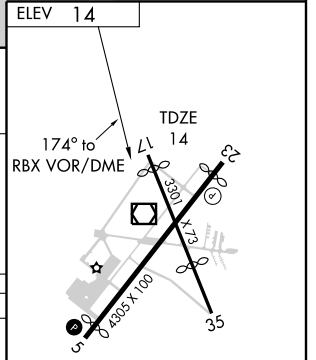
MISSED APPROACH: Climb to 1000 then climbing left turn to 2000 direct RBX VOR/DME and hold.

| | | |
|--------------------------|--|--|
| AWOS-3 128.275 | WASHINGTON CENTER 124.725 350.35 | UNICOM 122.8 (CTAF) 0 |
|--------------------------|--|--|



SE-2, 22 OCT 2009 to 19 NOV 2009

SE-2, 22 OCT 2009 to 19 NOV 2009



| | | | | |
|---------------------|---------|------|------|-------|
| Remain within 10 NM | VOR/DME | 1000 | 2000 | RBX |
| | | ↑ | ↶ | 111.6 |
| | | | | 4 |
| | | | | 174° |
| | | | | 354° |
| | | | | 1100 |
| | | | | 4 NM |

| CATEGORY | A | B | C | D |
|--------------|---------------------------|---------------------------|-------------------------|----|
| S-17 | 1100-1¼ 1086 (1100-1¼) | 1100-1½ 1086 (1100-1½) | 1100-3 1086 (1100-3) | NA |
| CIRCLING | 1100-1¼ 1086 (1100-1¼) | 1100-1½ 1086 (1100-1½) | 1100-3 1086 (1100-3) | NA |
| DME MINIMUMS | | | | |
| S-17 | 440-1 | 426 (500-1) | 440-1¼ 426 (500-1¼) | NA |
| CIRCLING | 600-1 | 586 (600-1) | 600-1½ 586 (600-1½) | NA |

MANTEO, NORTH CAROLINA
Amdt 4 09239

35° 55' N-75° 42' W

VOR RWY 17

MANTEO/ DARE COUNTY RGNL (MQI)

REIL Rwy 5 **0**
MIRL Rwy 5-23 and 17-35 **0**