

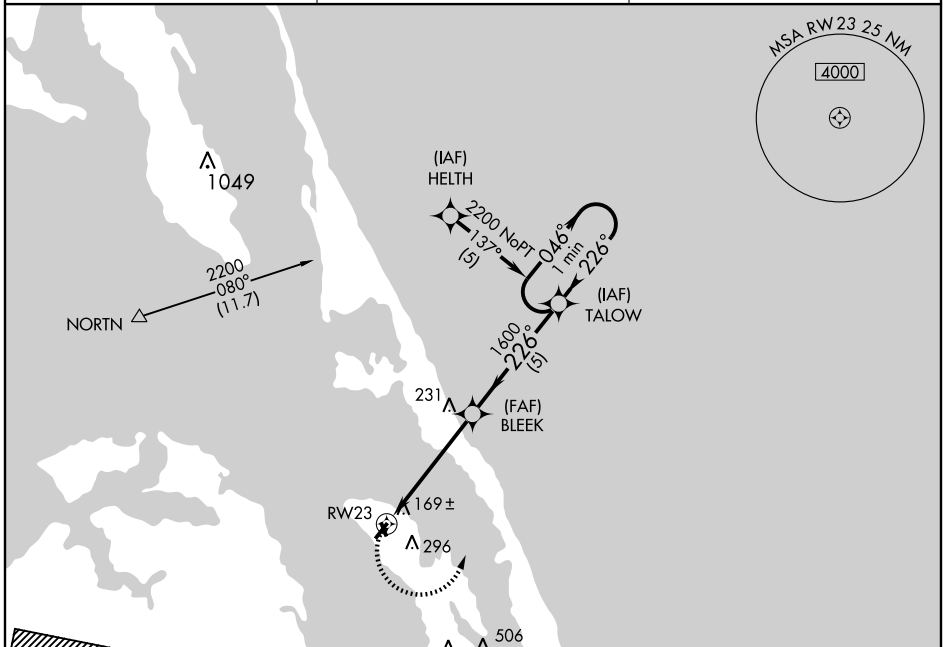
APP CRS	Rwy Idg	4004
226°	TDZE	13
	Apt Elev	14

GPS RWY 23

MANTEO/ DARE COUNTY RGNL (MQI)

	MISSED APPROACH: Climbing left turn to 2200 direct TALOW WP and hold.
--	---

AWOS-3 128.275	WASHINGTON CENTER 124.725 350.35	UNICOM 122.8 (CTAF)
--------------------------	--	-------------------------------

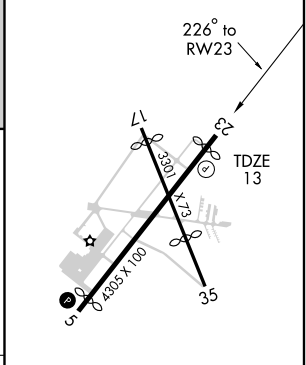
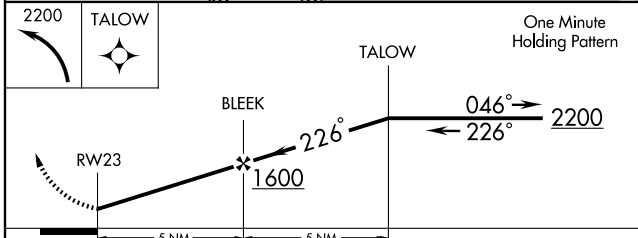


SE-2, 22 OCT 2009 to 19 NOV 2009

SE-2, 22 OCT 2009 to 19 NOV 2009



ELEV	14
------	-----------



CATEGORY	A	B	C	D
S-23	440-1 427 (500-1)		440-1¼ 427 (500-1¼)	NA
CIRCLING	600-1 586 (600-1)		600-1½ 586 (600-1½)	NA

REIL Rwy 5
 MIRL Rwy 5-23 and 17-35

GPS RWY 23