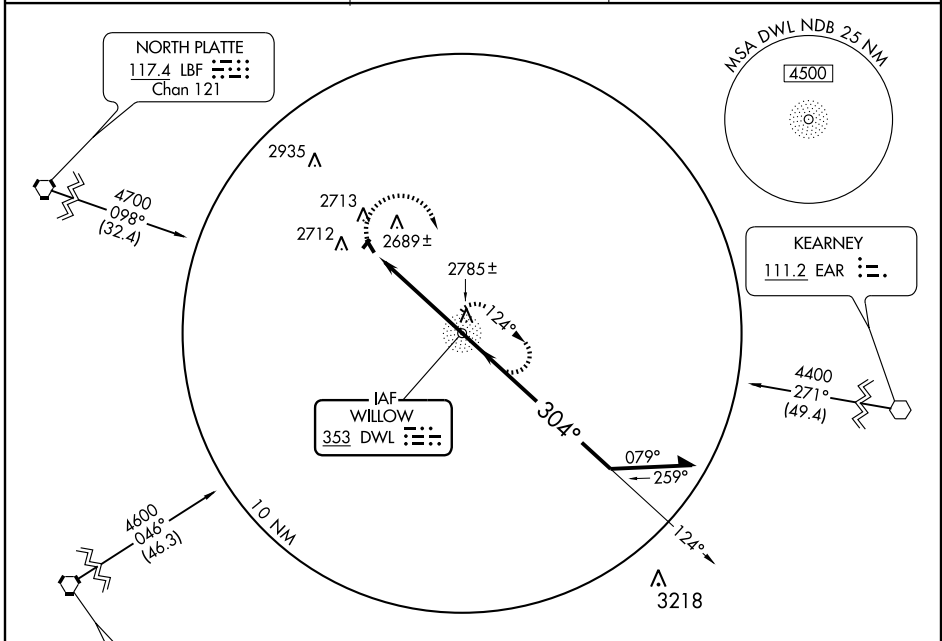


APP CRS <b>304°</b>	Rwy ldg TDZE Apt Elev	N/A N/A <b>2559</b>
------------------------	-----------------------------	---------------------------

Use Jim Kelly Field altimeter setting; if not received, use North Platte altimeter setting, and increase all MDAs 40 feet.
 
 MISSED APPROACH: Climbing right turn to 4400 direct DWL NDB and hold.

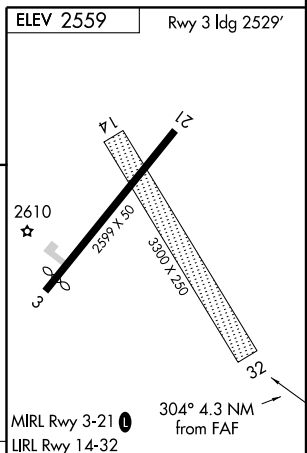
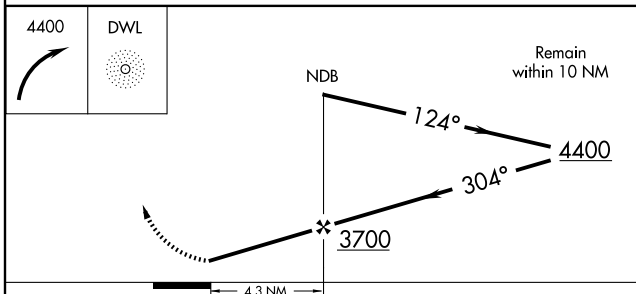
JIM KELLY FIELD AWOS-3 <b>121.025</b>	DENVER CENTER <b>132.7 397.85</b>	UNICOM <b>122.8</b> (CTAF)
--	--------------------------------------	-------------------------------



NC-2, 22 OCT 2009 to 19 NOV 2009

NC-2, 22 OCT 2009 to 19 NOV 2009

ELEV 2559	Rwy 3 ldg 2529°
-----------	-----------------



CATEGORY	A	B	C	D	FAF to MAP 4.3 NM					
CIRCLING	3140-1	581 (600-1)	3140-1½ 581 (600-1½)	NA	Knots	60	90	120	150	180
					Min:Sec	4:18	2:52	2:09	1:43	1:26