

NDB RWY 22

GORDON MUNI (GRN)

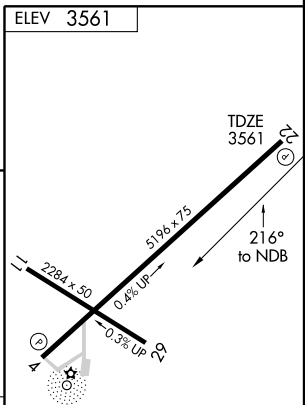
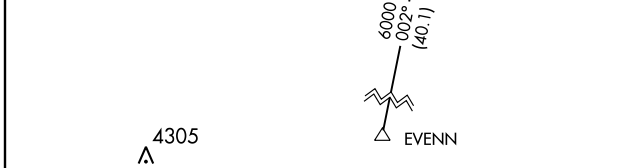
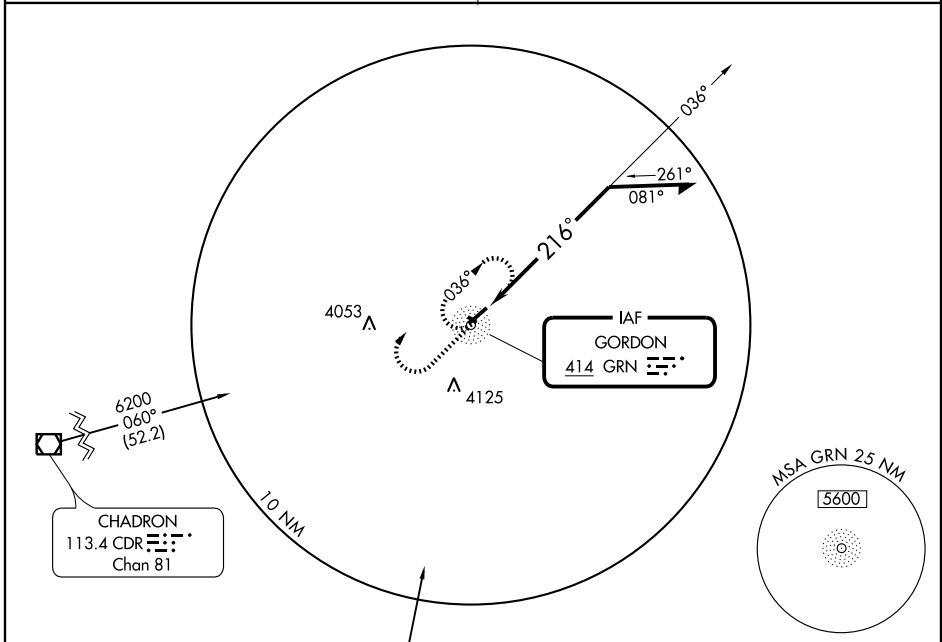
NDB GRN 414	APP CRS 216°	Rwy Idg 5196
		TDZE 3561
		Apt Elev 3561

▽ Use Pine Ridge, SD altimeter setting.
△ NA

MISSED APPROACH: Climb to 5300 then right turn direct GRN NDB and hold.

DENVER CENTER
127.95 338.2

UNICOM
122.8 (CTAF) 0



CATEGORY	A	B	C	D
S-22	4240-1	679 (700-1)	4240-2 679 (700-2)	4240-2 1/4 679 (700-2 1/4)
CIRCLING	4240-1	679 (700-1)	4240-2 679 (700-2)	4400-2 3/4 839 (900-2 3/4)

Knots	60	90	120	150	180
Min:Sec					

NC-2, 22 OCT 2009 to 19 NOV 2009

NC-2, 22 OCT 2009 to 19 NOV 2009