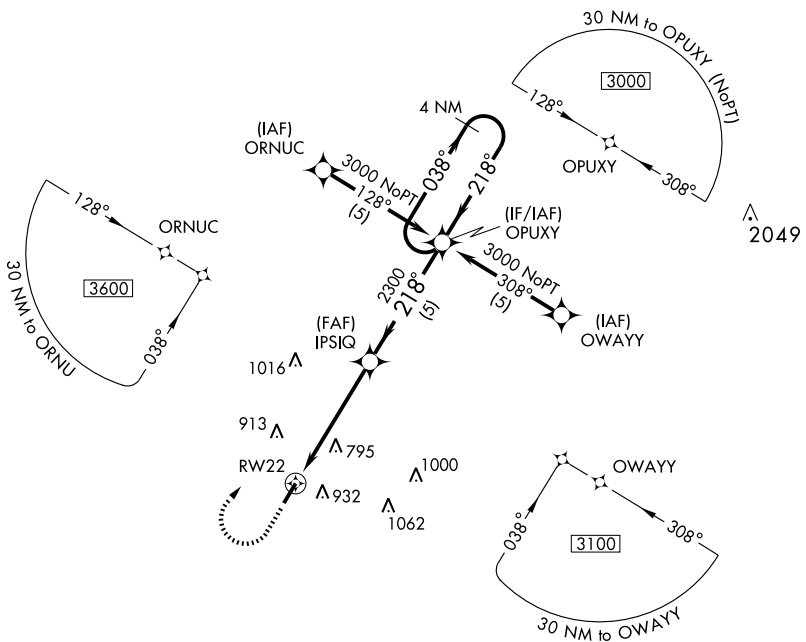


RNAV (GPS) RWY 22

SILER CITY MUNI (5W8)

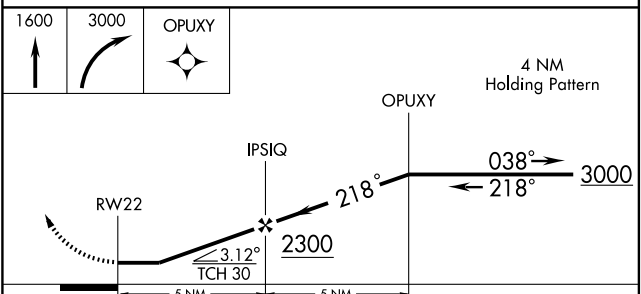
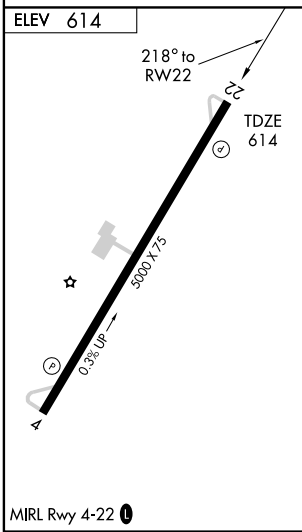
APP CRS 218°	Rwy Idg TDZE Apt Elev	5000 614 614
------------------------	-----------------------------	---

<p>▼ Use Greensboro altimeter setting. ▲ NA GPS or RNP-0.3 required. DME/DME RNP-0.3 NA.</p>	<p>MISSED APPROACH: Climb to 1600 then climbing right turn to 3000 direct OPUXY WP and hold.</p>
<p>GREENSBORO APP CON 118.5 327.075</p>	<p>UNICOM 122.7 (CTAF) 1</p>



SE-2, 22 OCT 2009 to 19 NOV 2009

SE-2, 22 OCT 2009 to 19 NOV 2009



CATEGORY	A	B	C	D
RNAV MDA	1240-1	626 (700-1)	1240-1 3/4 626 (700-1 3/4)	NA
CIRCLING	1400-1 786 (800-1)	1400-1 1/4 786 (800-1 1/4)	1400-2 1/4 786 (800-2 1/4)	NA