

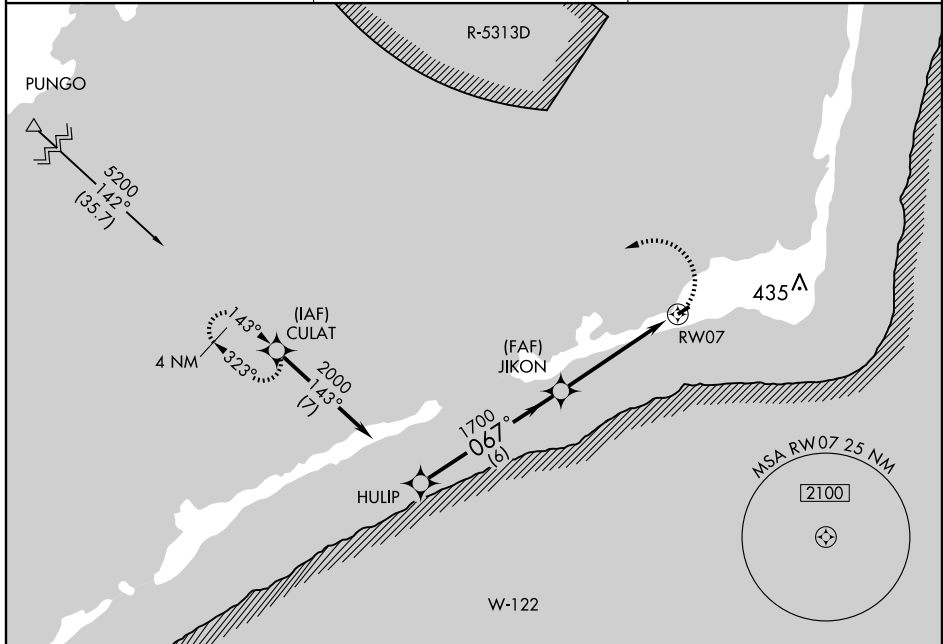
RNAV (GPS) RWY 7

HATTERAS/BILLY MITCHELL (HSE)

APP CRS 067°	Rwy Idg 3000
	TDZE 15
	Apt Elev 17

<p>▼ Procedure not authorized at night. ▲ NA GPS or RNP-0.3 Required. DME/DME RNP-0.3 NA.</p>	<p>MISSED APPROACH: Climbing left turn to 6000 direct CULAT WP and hold.</p>
---	--

ASOS 118.375	CHERRY POINT APP CON 119.75 360.775	CTAF 122.9
------------------------	---	----------------------



SE-2, 22 OCT 2009 to 19 NOV 2009

SE-2, 22 OCT 2009 to 19 NOV 2009

<p>Procedure Turn NA</p>		<p>ELEV 17</p>		
<p>HULIP</p> <p>2000</p>		<p>6000 CULAT</p>		
<p>JIKON</p> <p>1700</p>		<p>▲ 246±</p>		
<p>1.4 NM to RW07</p> <p>3.08° TCH 55</p>		<p>TDZE 15</p> <p>067° to RW07</p>		
<p>6 NM</p>		<p>3.6 NM</p>		
<p>1.4</p>		<p>3000 x 75</p>		
CATEGORY	A	B	C	D
LNVA MDA	500-1	485 (500-1)	500-1½ 485 (500-1½)	NA
CIRCLING	560-1	543 (600-1)	560-1½ 543 (600-1½)	NA