

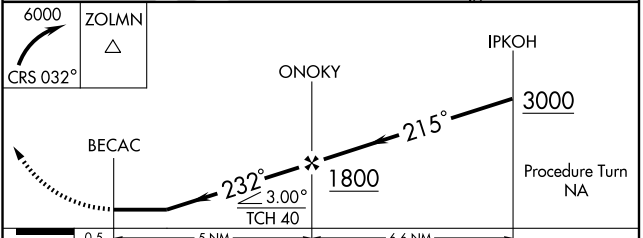
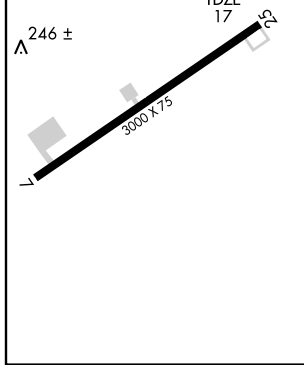
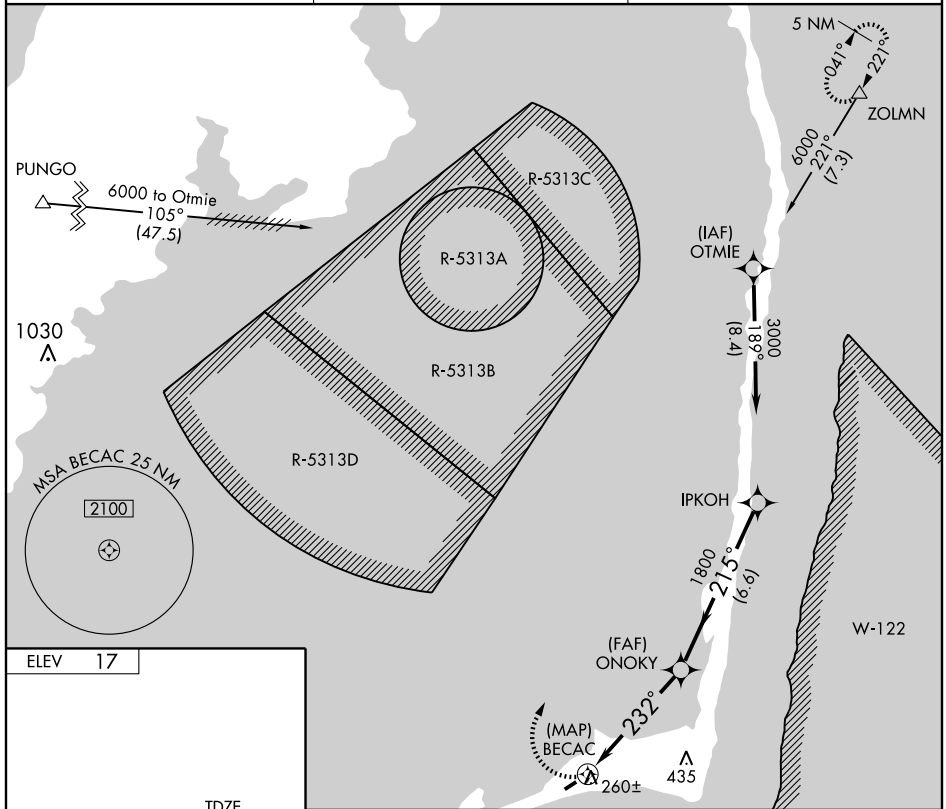
RNAV (GPS) RWY 25

HATTERAS/BILLY MITCHELL (H5E)

APP CRS 232°	Rwy Idg 3000
TDZE 17	
Apt Elev 17	

<p>⚠ NA Procedure not authorized at night. GPS or RNP-0.3 Required. DME/DME RNP-0.3 NA.</p>	<p>MISSED APPROACH: Climbing right turn to 6000 via course 032° to ZOLMNM WP and hold.</p>
--	--

ASOS 118.375	CHERRY POINT APP CON 119.75 360.775	CTAF 122.9
------------------------	---	----------------------



CATEGORY	A	B	C	D
LNAV MDA	520-1	503 (600-1)	520-1½ 503 (600-1½)	NA
CIRCLING	560-1	543 (600-1)	560-1½ 543 (600-1½)	NA

SE-2, 22 OCT 2009 to 19 NOV 2009

SE-2, 22 OCT 2009 to 19 NOV 2009