

SONORA, TEXAS

AL-6360 (FAA)

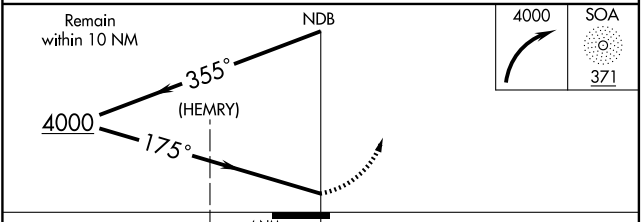
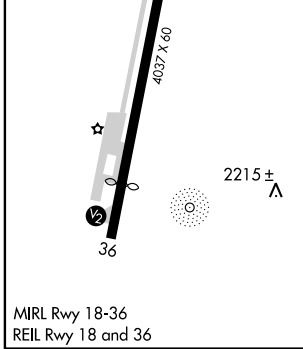
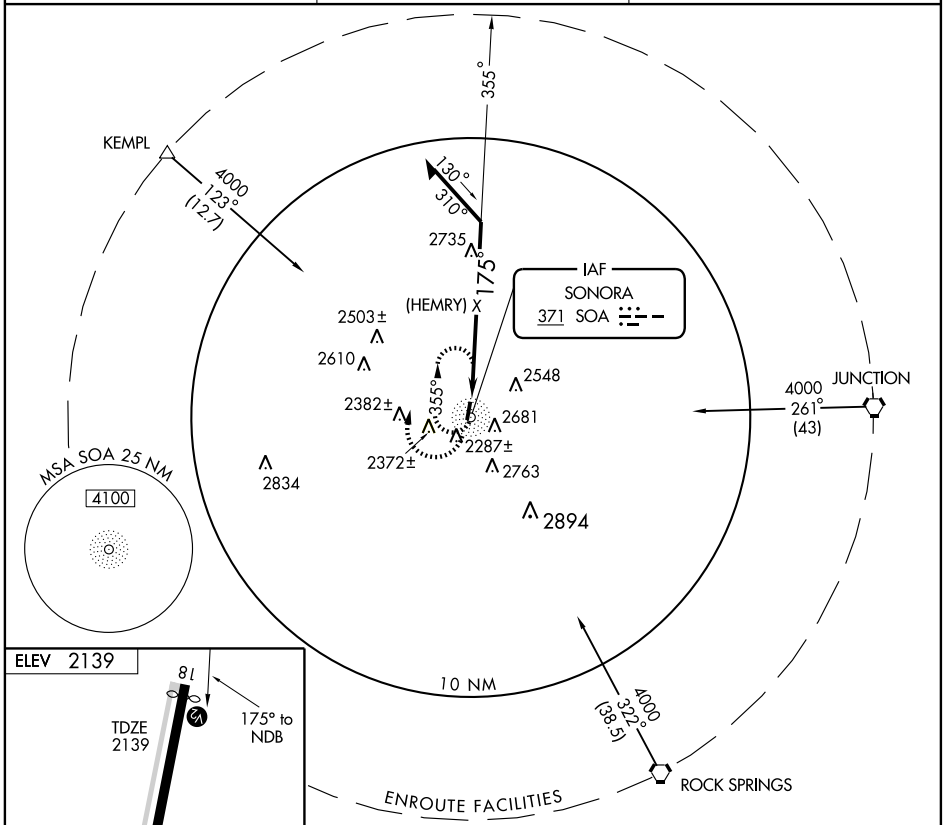
NDB or GPS RWY 18

SONORA MUNI (SOA)

NDB SOA 371	APP CRS 175°	Rwy Idg 3944
		TDZE 2139
		Apt Elev 2139

▼ Use San Angelo altimeter setting.
▲ NA Procedure not authorized at night.
 MISSED APPROACH: Climbing right turn to 4000 in SOA NDB holding pattern.

AWOS-3 118.075	HOUSTON CENTER 125.75 346.4	UNICOM 122.8 (CTAF) 0
--------------------------	---------------------------------------	---------------------------------



CATEGORY	A	B	C	D
S-18	3240-1¼ 1101 (1200-1¼)	3240-1½ 1101 (1200-1½)		NA
CIRCLING	3240-1¼ 1101 (1200-1¼)	3240-1½ 1101 (1200-1½)		NA

SONORA, TEXAS
Amdt 3 09015

30°35' N-100°39' W

SONORA MUNI (SOA) NDB or GPS RWY 18

SC-3, 22 OCT 2009 to 19 NOV 2009

SC-3, 22 OCT 2009 to 19 NOV 2009