

RNAV (GPS) RWY 16

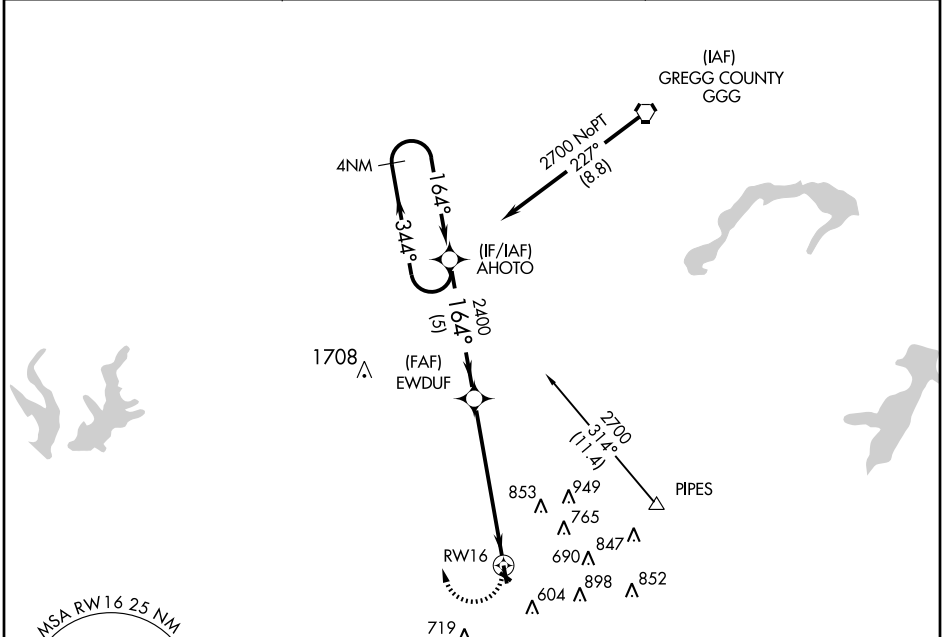
HENDERSON/ RUSK COUNTY (R.F.I)

APP CRS 164°	Rwy Idg 4004
	TDZE 442
	Apt Elev 442

▽ GPS or RNP-0.3 REQUIRED. DME/DME RNP-0.3 NA.
▲ NA Use East Texas Rgnl altimeter setting; when not received, procedure not authorized.

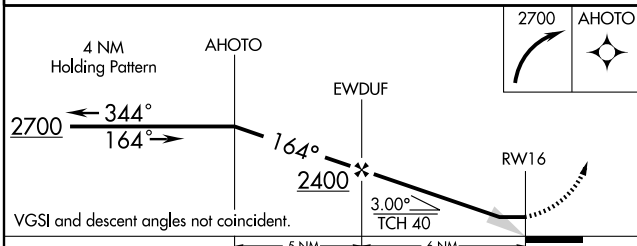
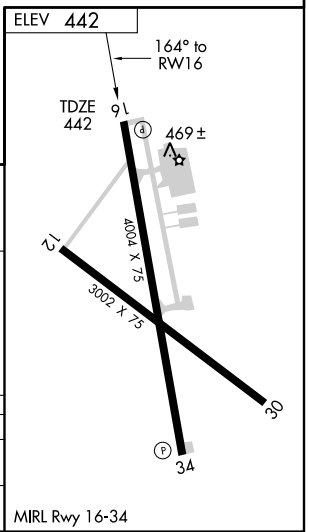
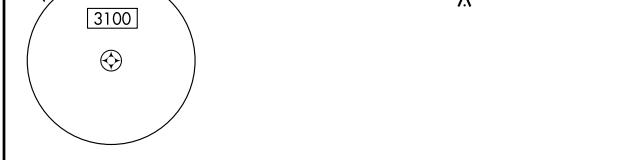
MISSED APPROACH: Climbing right turn to 2700 direct AHOTO WP and hold.

AWOS-3 119.375	LONGVIEW APP CON* 118.25 270.3	UNICOM 122.8 (CTAF)
--------------------------	--	-------------------------------



SC-2, 22 OCT 2009 to 19 NOV 2009

SC-2, 22 OCT 2009 to 19 NOV 2009



CATEGORY	A	B	C	D
LNVA MDA	1000-1	558 (600-1)	1000-1½ 558 (600-1½)	NA
CIRCLING	1040-1 598 (600-1)	1080-1 638 (700-1)	1080-1¾ 638 (700-1¾)	NA