

CHESTER, CONNECTICUT

AL-6356 (FAA)

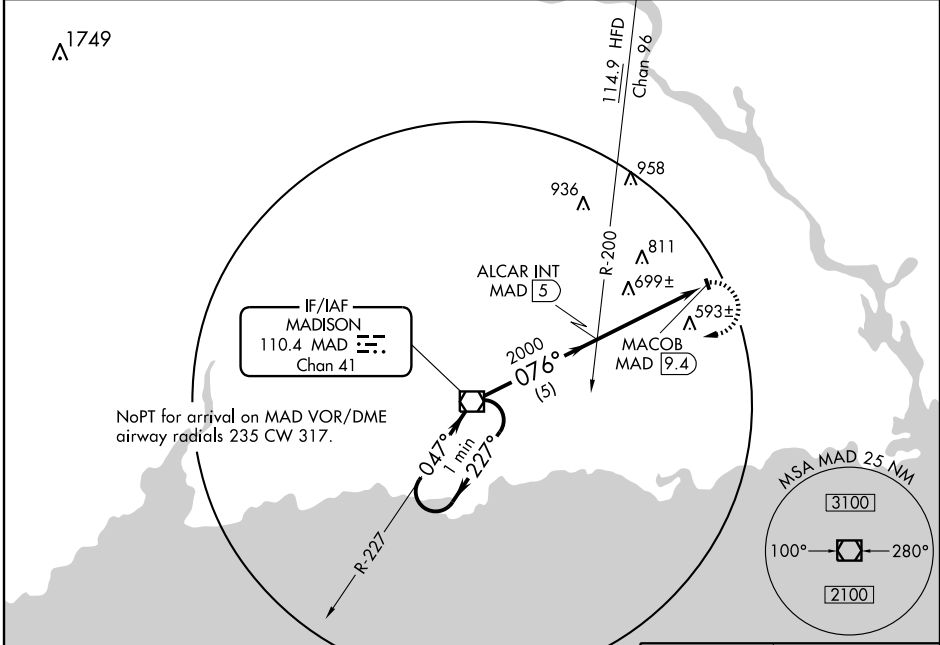
VOR-A
CHESTER(SNC)

VOR/DME MAD 110.4 Chan 41	APP CRS 076°	Rwy Idg TDZE Apt Elev	N/A N/A 416
---	------------------------	-----------------------------	--

▲ Procedure NA at night except by prior arrangement for runway lights.
When local altimeter setting not received, use Meriden altimeter setting and increase all MDA 100 feet.

MISSED APPROACH: Climbing right turn to 2100 direct MAD VOR/DME and hold.

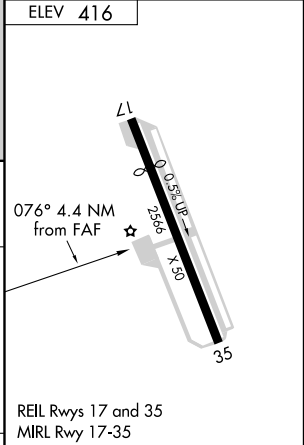
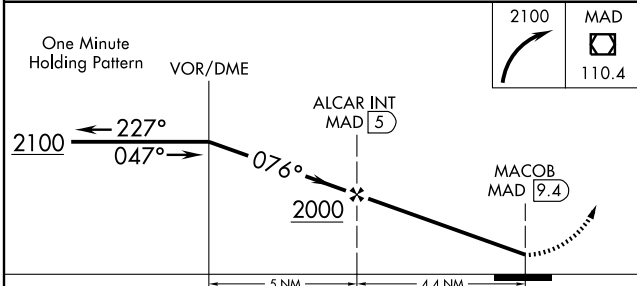
AWOS-3 118.325	NEW YORK APP CON 124.075 343.65	UNICOM 122.725 (CTAF)
--------------------------	---	---------------------------------



NE-1, 22 OCT 2009 to 19 NOV 2009

NE-1, 22 OCT 2009 to 19 NOV 2009

ELEV 416



CATEGORY	A	B	C	D	FAF to MAP 4.4 NM												
CIRCLING	960-1	544 (600-1)		NA	<table border="1"> <tr> <td>Knots</td> <td>60</td> <td>90</td> <td>120</td> <td>150</td> <td>180</td> </tr> <tr> <td>Min:Sec</td> <td>4:24</td> <td>2:56</td> <td>2:12</td> <td>1:46</td> <td>1:28</td> </tr> </table>	Knots	60	90	120	150	180	Min:Sec	4:24	2:56	2:12	1:46	1:28
Knots	60	90	120	150	180												
Min:Sec	4:24	2:56	2:12	1:46	1:28												

CHESTER, CONNECTICUT
Amdt 4 09239

41° 23'N-72° 30'W

CHESTER (SNC)
VOR-A