

RNAV (GPS) RWY 35

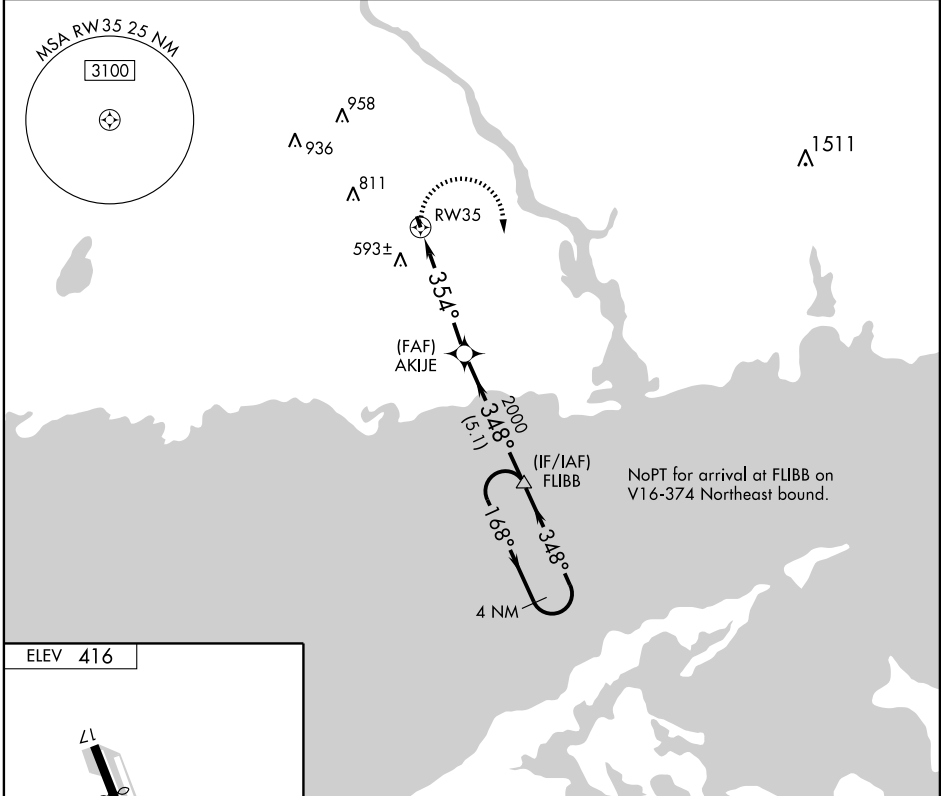
CHESTER (SNC)

APP CRS 354°	Rwy Idg 2566
	TDZE 416
	Apt Elev 416

▲ DME/DME RNP-0.3 NA. Procedure NA at night except by prior arrangement for runway lights. Visibility reduction by helicopters NA. When local altimeter setting not received, use Meriden altimeter setting and increase all MDA 100 feet.

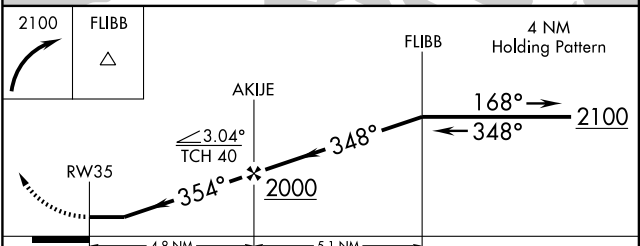
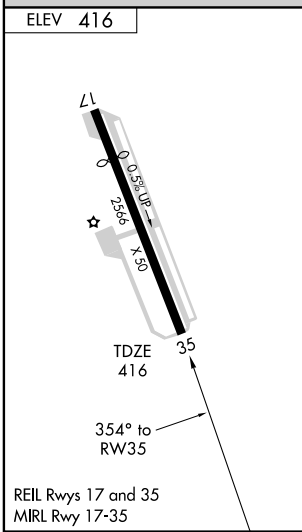
MISSED APPROACH: Climbing right turn to 2100 direct FLIBB and hold.

AWOS-3 118.325	NEW YORK APP CON 124.075 343.65	UNICOM 122.725 (CTAF)
--------------------------	---	---------------------------------



NE-1, 22 OCT 2009 to 19 NOV 2009

NE-1, 22 OCT 2009 to 19 NOV 2009



CATEGORY	A	B	C	D
LNAV MDA	820-1	404 (500-1)	NA	
CIRCLING	920-1	504 (600-1)	NA	