

RNAV (GPS) RWY 17

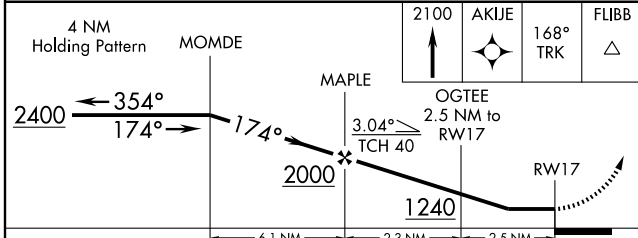
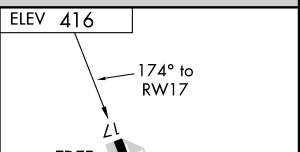
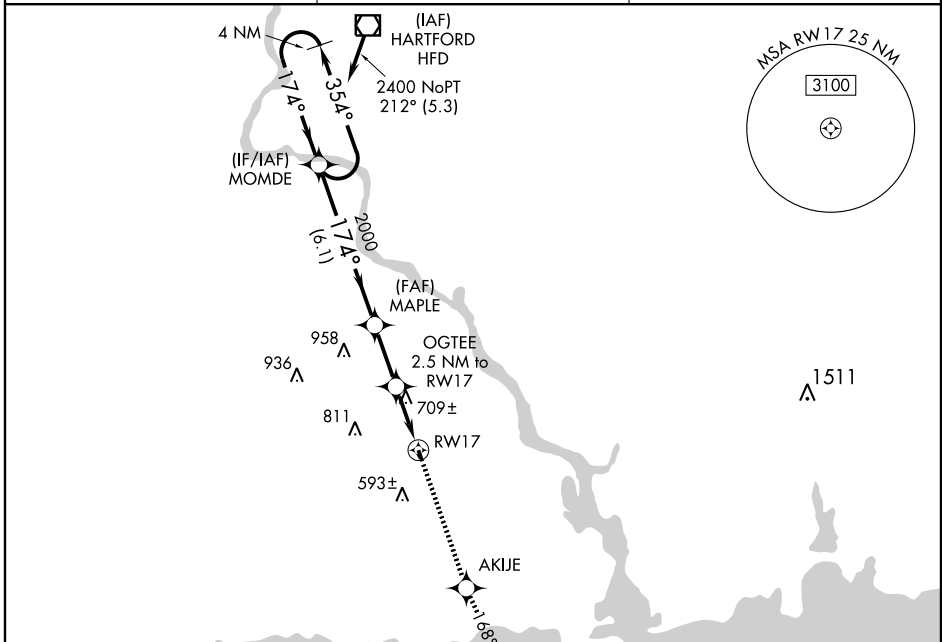
CHESTER (SNC)

APP CRS	Rwy Idg	2007
174°	TDZE	416
	Apt Elev	416

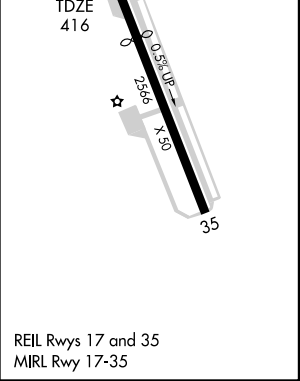
▲ DME/DME RNP-0.3 NA. Procedure NA at night except by prior arrangement for runway lights.
 ▲ Visibility reduction by helicopters NA. When local altimeter setting not received, use Meriden altimeter setting and increase all MDA 100 feet.

MISSED APPROACH: Climb to 2100 direct AKIJE and via track 168° to FLIBB and hold.

AWOS-3 118.325	NEW YORK APP CON 124.075 343.65	UNICOM 122.725 (CTAF)
--------------------------	---	---------------------------------



CATEGORY	A	B	C	D
LNVA MDA	960-1	544 (600-1)		NA
CIRCLING	960-1	544 (600-1)		NA



NE-1, 22 OCT 2009 to 19 NOV 2009

NE-1, 22 OCT 2009 to 19 NOV 2009

REIL Rwy 17 and 35
 MIRL Rwy 17-35