

# RNAV (GPS) RWY 4

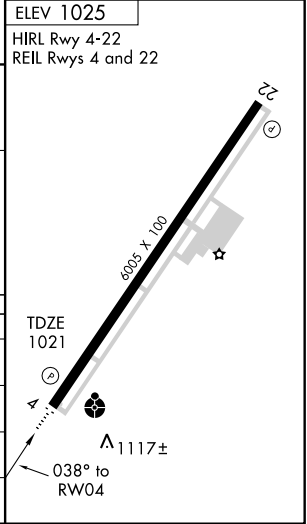
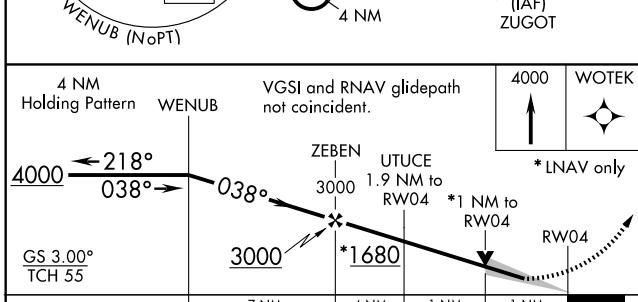
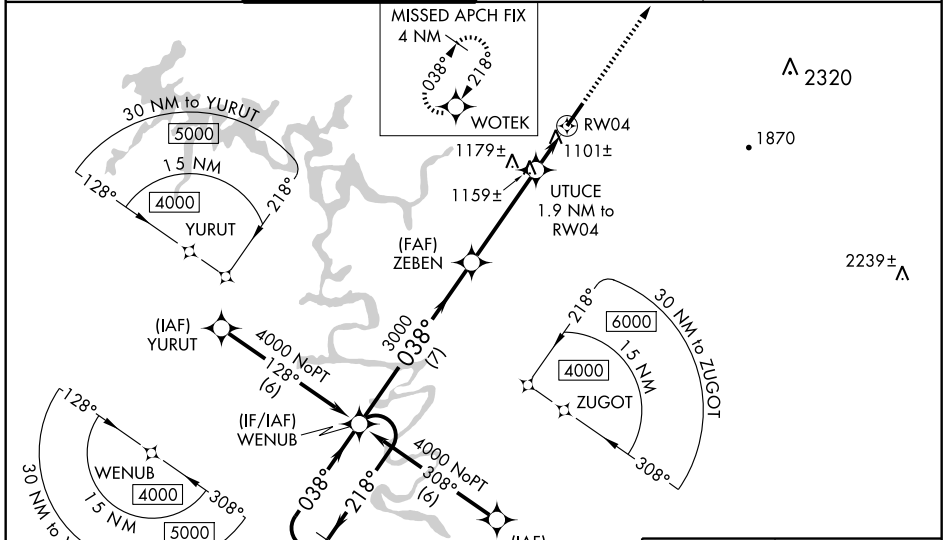
SPARTA / UPPER CUMBERLAND RGNL (SR.B)

WAAS CH <b>82210</b> <b>W04A</b>	APP CRS <b>038°</b>	Rwy Idg TDZE Apt Elev	<b>6005</b> <b>1021</b> <b>1025</b>
--	------------------------	-----------------------------	---

Baro-VNAV NA when using Crossville altimeter setting. For uncompensated Baro-VNAV systems, LNAV/VNAV NA below -17° C (2° F) or above 47° C (116° F). Inoperative table does not apply to LNAV/VNAV all Cats. DME/DME RNP-0.3 NA. When local altimeter setting not received, use Crossville altimeter setting and increase LPV DA to 1393 and all Cats. visibility ½ mile. Increase LNAV/VNAV DA to 1568 and all Cats. visibility ¾ mile. Increase all MDA 180 feet and LNAV Cat. C visibility ¾ mile, Cat. D ½ mile. Increase Circling Cat. C/D visibility ¼ mile. Inoperative table does not apply to LNAV Cat. C when using Crossville altimeter setting. VDP NA when using Crossville altimeter setting.

ODALS  
MISSED APPROACH:  
Climb to 4000 direct WOTEK and hold.

AWOS-3 <b>128.25</b>	MEMPHIS CENTER <b>132.1 263.1</b>	GCO <b>121.725</b>	UNICOM <b>122.8 (CTAF) 0</b>
-------------------------	--------------------------------------	-----------------------	---------------------------------



CATEGORY	A	B	C	D
LPV DA	1221-¾		200 (200-¾)	
LNAV/VNAV DA	1396-1¼		375 (400-1¼)	
LNAV MDA	1380-¾		359 (400-¾)	
CIRCLING	1480-1	455 (500-1)	1480-1½	1580-2
			455 (500-1½)	555 (600-2)

# RNAV (GPS) RWY 4

SE-1, 22 OCT 2009 to 19 NOV 2009

SE-1, 22 OCT 2009 to 19 NOV 2009