

# NDB RWY 4

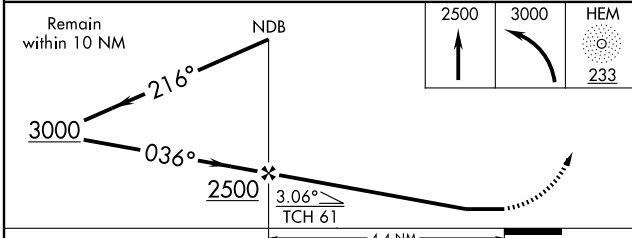
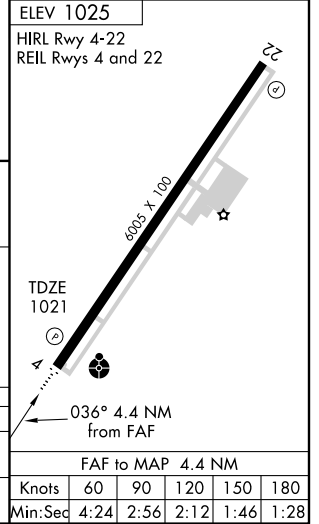
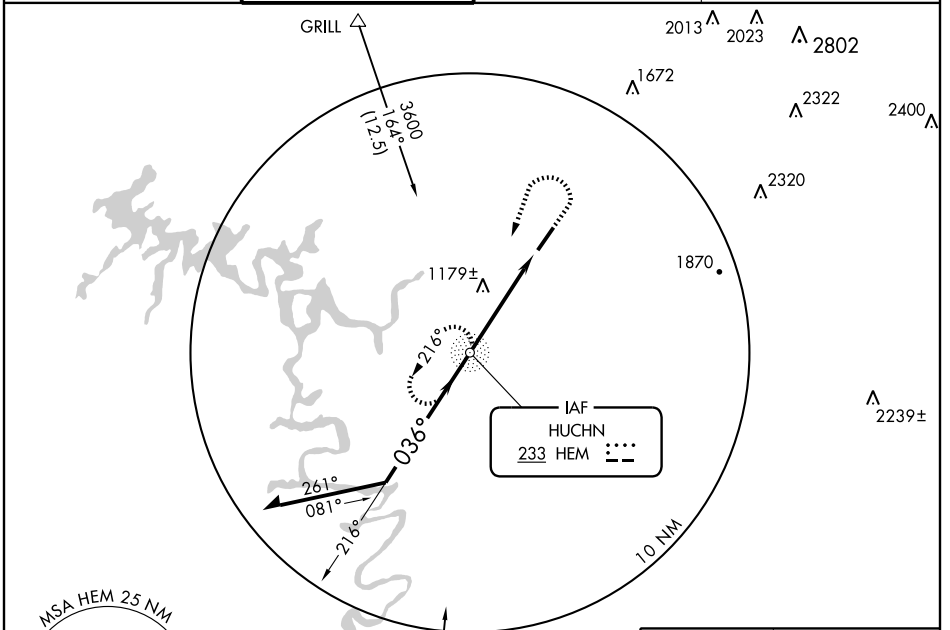
SPARTA / UPPER CUMBERLAND RGNL (SR.B)

NDB HEM <b>233</b>	APP CRS <b>036°</b>	Rwy Idg <b>6005</b>
		TDZE <b>1021</b>
		Apt Elev <b>1025</b>

**▼** Inoperative table does not apply to Cat. C. When local altimeter setting not received, use Crossfield altimeter setting and increase all MDA 180 feet. Increase S-4 Cat. C/D visibility 1/2 mile. Increase Circling Cat. C/D visibility 1/4 mile.

**ODALS**  
 ...  
**MISSED APPROACH:** Climb to 2500 then climbing left turn to 3000 direct HEM NDB and hold.

AWOS-3 <b>128.25</b>	MEMPHIS CENTER <b>132.1 263.1</b>	GCO <b>121.725</b>	UNICOM <b>122.8 (CTAF)</b>
-------------------------	--------------------------------------	-----------------------	-------------------------------



CATEGORY	A	B	C	D
S-4	1480-3/4 459 (500-3/4)		1480-1 1/4 459 (500-1 1/4)	1480-1 1/2 459 (500-1 1/2)
CIRCLING	1480-1 455 (500-1)		1480-1 1/2 455 (500-1 1/2)	1580-2 555 (600-2)

FAF to MAP 4.4 NM					
Knots	60	90	120	150	180
Min:Sec	4:24	2:56	2:12	1:46	1:28

# NDB RWY 4

SE-1, 22 OCT 2009 to 19 NOV 2009

SE-1, 22 OCT 2009 to 19 NOV 2009