

ILS or LOC RWY 4

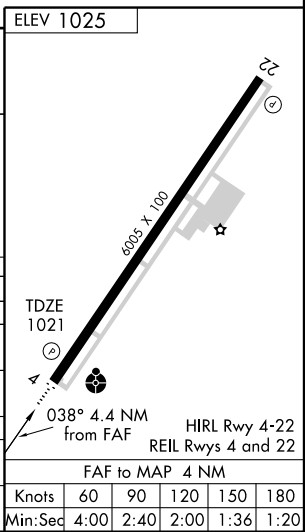
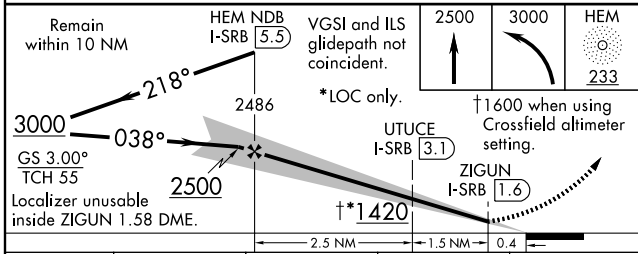
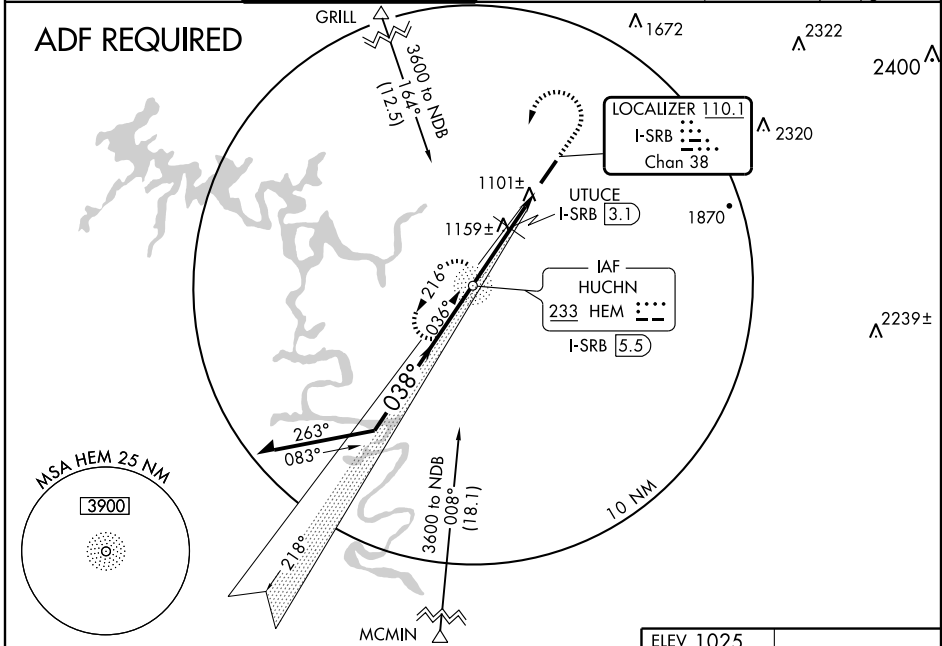
SPARTA/UPPER CUMBERLAND RGNL (SRB)

LOC/DME I-SRB 110.1 Chan 38	APP CRS 038°	Rwy Idg TDZE Apt Elev	6005 1021 1025
---	------------------------	-----------------------------	---

ADF REQUIRED. When local altimeter setting not received, use Crossfield altimeter setting and increase DA to 1393 and S-ILS 4 all Cats. visibility 1/2 mile. Increase all MDA 180 feet and S-LOC 4 Cat. C visibility 3/4 mile, Cat. D 1/2 mile. Inoperative table does not apply to UTUCE FIX Cat. C minimums when using Crossfield altimeter setting.

ODALS
MISSED APPROACH: Climb to 2500 then climbing left turn to 3000 direct HEM NDB and hold.

AWOS-3 128.25	MEMPHIS CENTER 132.1 263.1	GCO 121.725	UNICOM 122.8 (CTAF)
-------------------------	--------------------------------------	-----------------------	-------------------------------



CATEGORY	A	B	C	D
S-ILS 4		1221-3/4	200 (200-3/4)	
S-LOC 4		1420-3/4	399 (400-3/4)	1420-1/4 399 (400-1/4)
CIRCLING	1480-1	455 (500-1)	1480-1/2 455 (500-1/2)	1580-2 555 (600-2)
UTUCE FIX MINIMUMS				
S-LOC 4		1360-3/4	339 (400-3/4)	1360-1/4 339 (400-1/4)
CIRCLING	1480-1	455 (500-1)	1480-1/2 455 (500-1/2)	1580-2 555 (600-2)

Knots	60	90	120	150	180
Min:Sec	4:00	2:40	2:00	1:36	1:20

SE-1, 22 OCT 2009 to 19 NOV 2009

SE-1, 22 OCT 2009 to 19 NOV 2009