

WOODLAND, CALIFORNIA

AL-6353 (FAA)

VORTAC SAC <b>115.2</b> Chan <b>99</b>	APP CRS <b>296°</b>	Rwy Idg TDZE Apt Elev <b>125</b>	<b>N/A</b> <b>N/A</b> <b>125</b>
--	------------------------	---	--

# VOR/DME-A

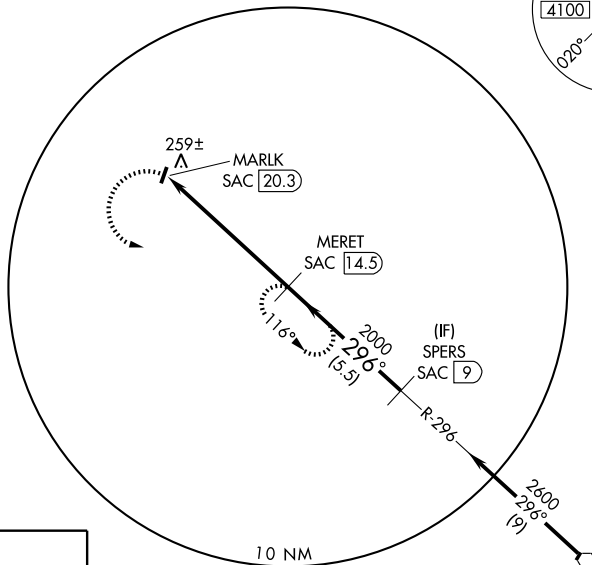
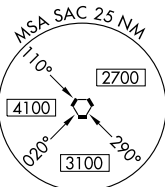
WOODLAND/WATTS-WOODLAND (O41)

**NA** Procedure NA at night.  
Use Sacramento Inlt altimeter setting; when not received, use Sacramento Executive altimeter setting and increase all MDA 20 feet.

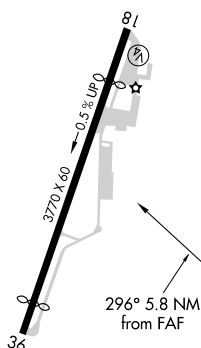
MISSED APPROACH: Climbing left turn to 2000 via SAC VORTAC R-296 to MERET/14.5 DME and hold.

TRAVIS APP CON <b>126.6 291.0</b>	UNICOM <b>122.8 (CTAF)</b>
--------------------------------------	-------------------------------

• 1940



ELEV 125



Procedure NA for arrival on SAC VORTAC airway radials 257 CW 329.

	2000 SAC R-296	MERET SAC 14.5	MERET SAC 14.5	SPERS SAC 9	
		MARLK SAC 20.3	2000	2600	Procedure Turn NA
		5.8 NM		5.5 NM	
CATEGORY	A	B	C	D	
CIRCLING	620-1 495 (500-1)	620-1¼ 495 (500-1¼)		NA	

MIRL Rwy 18-36

WOODLAND, CALIFORNIA

Amdt 5 09127

WOODLAND/WATTS-WOODLAND (O41)

38°40'N - 121°52'W

# VOR/DME-A

SW-2, 22 OCT 2009 to 19 NOV 2009

SW-2, 22 OCT 2009 to 19 NOV 2009