

RAYVILLE, LOUISIANA

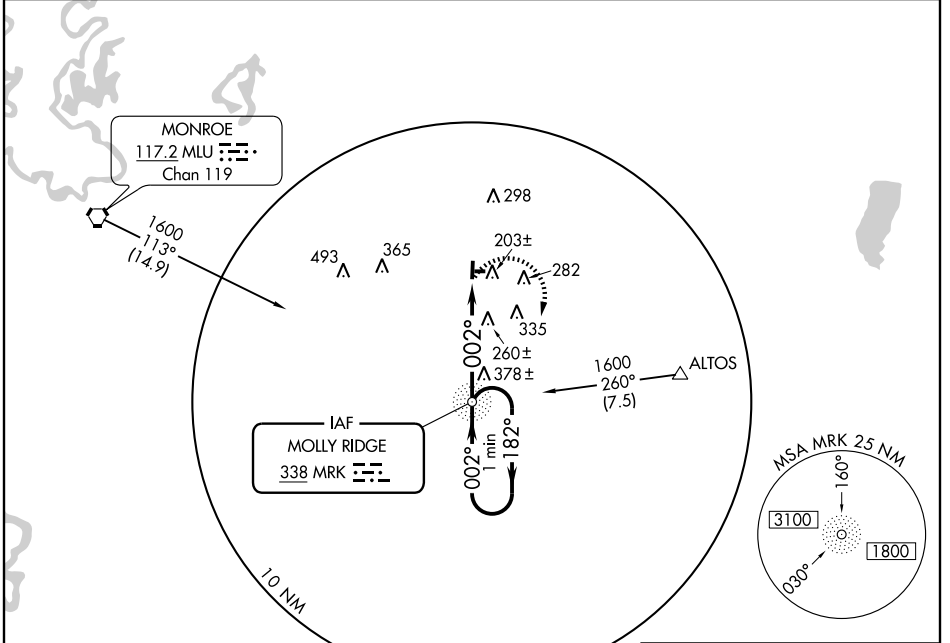
AL-6352 (FAA)

# NDB RWY 36

RAYVILLE/JOHN H. HOOKS JR. MEMORIAL (M79)

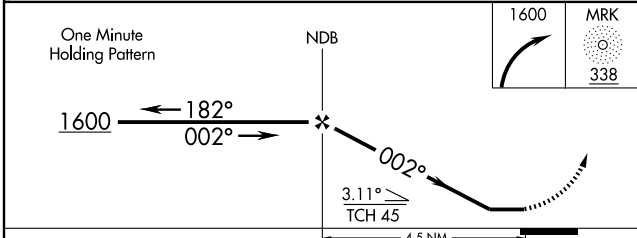
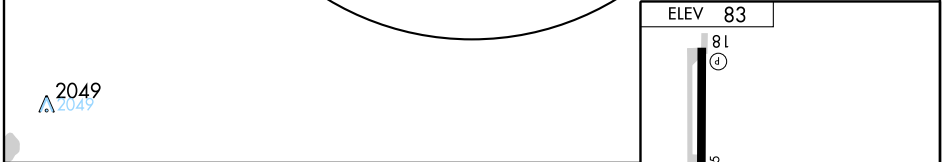
NDB MRK <b>338</b>	APP CRS <b>002°</b>	Rwy Idg TDZE Apt Elev	<b>3707</b> <b>82</b> <b>83</b>
-----------------------	------------------------	-----------------------------	---------------------------------------

<p>▼ Use Monroe altimeter setting.</p> <p>▲ NA</p>	<p>MISSED APPROACH: Climbing right turn to 1600 direct MRK NDB and hold.</p>
<p>MONROE APP CON ★</p> <p><b>126.9</b></p>	<p>UNICOM</p> <p><b>122.8</b> (CTAF) <b>0</b></p>



SC-4, 22 OCT 2009 to 19 NOV 2009

SC-4, 22 OCT 2009 to 19 NOV 2009



CATEGORY	A	B	C	D
S-36	660-1	578 (600-1)		NA
CIRCLING	660-1 577 (600-1)	680-1 597 (600-1)		NA

FAF to MAP 4.5 NM					
Knots	60	90	120	150	180
Min:Sec	4:30	3:00	2:15	1:48	1:30

RAYVILLE, LOUISIANA  
Amdt 3 09071

RAYVILLE/JOHN H. HOOKS JR. MEMORIAL (M79)  
32°29'N-91°46'W

# NDB RWY 36