

PEORIA, ILLINOIS

AL-6351 (FAA)

VOR-A

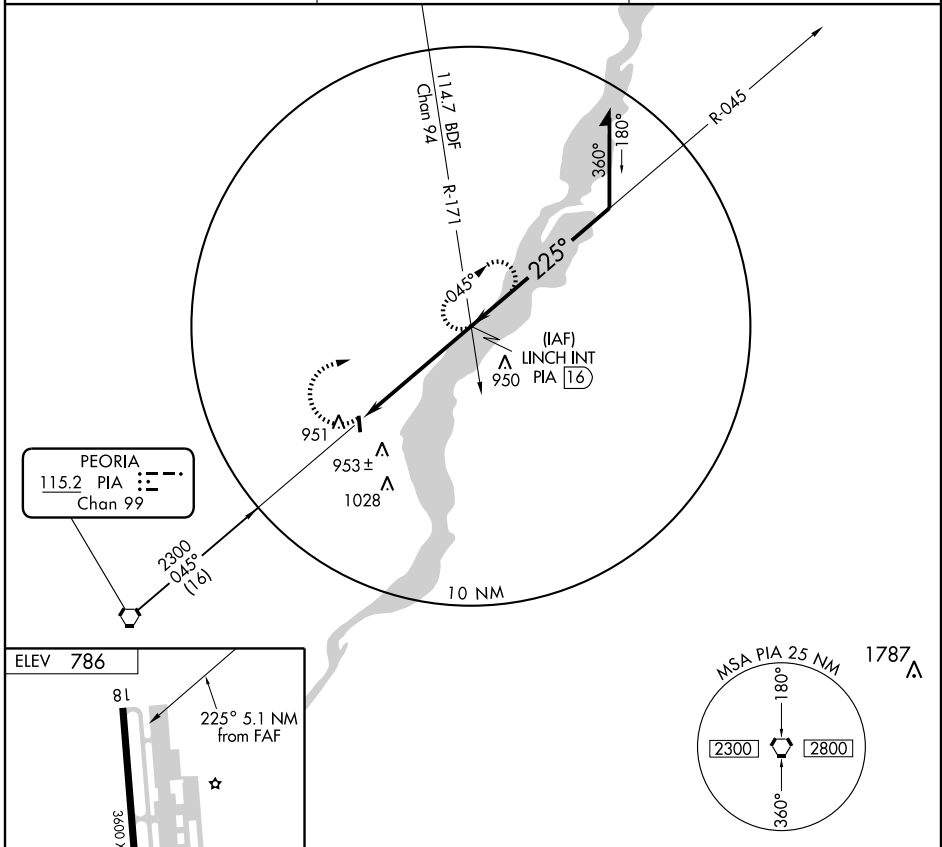
PEORIA/MT. HAWLEY AUXILIARY (3MY)

VORTAC PIA 115.2 Chan 99	APP CRS 225°	Rwy Idg TDZE Apt Elev	N/A N/A 786
--	------------------------	-----------------------------	--

▼ Use Greater Peoria Rgnl altimeter setting, when not received, use Marshall County altimeter setting and increase MDA 40 feet and increase Cat C visibility ¼ mile.

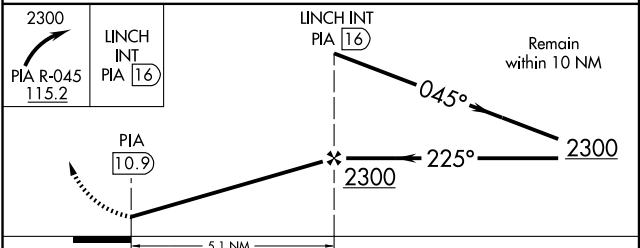
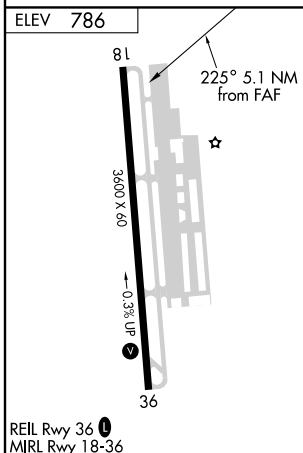
▲ NA MISSED APPROACH: Climbing right turn to 2300 via PIA VORTAC R-045 to LINCH Int/PIA 16 DME and hold.

PEORIA APP CON 125.8 269.2	CLINC DEL 121.6	UNICOM 122.7 (CTAF) ①
--------------------------------------	---------------------------	--



EC-3, 22 OCT 2009 to 19 NOV 2009

EC-3, 22 OCT 2009 to 19 NOV 2009



FAF to MAP 5.1 NM					
Knots	60	90	120	150	180
Min:Sec	5:06	3:24	2:33	2:02	1:42
CATEGORY	A	B	C	D	
CIRCLING	1360-1	574 (600-1)	1360-1½ 574 (600-1½)	NA	

PEORIA, ILLINOIS

PEORIA/MT. HAWLEY AUXILIARY (3MY)

Amtd 4 09239

40° 48' N-89° 37' W

VOR-A