

NDB RWY 33

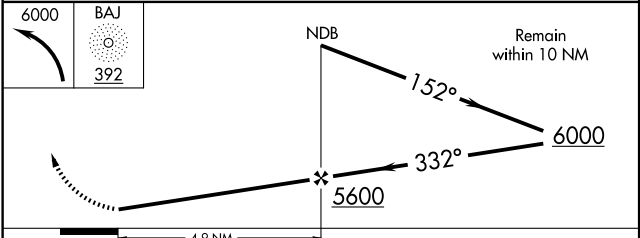
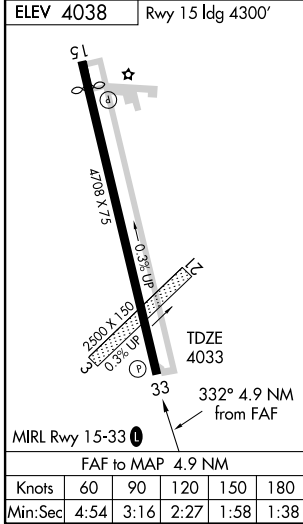
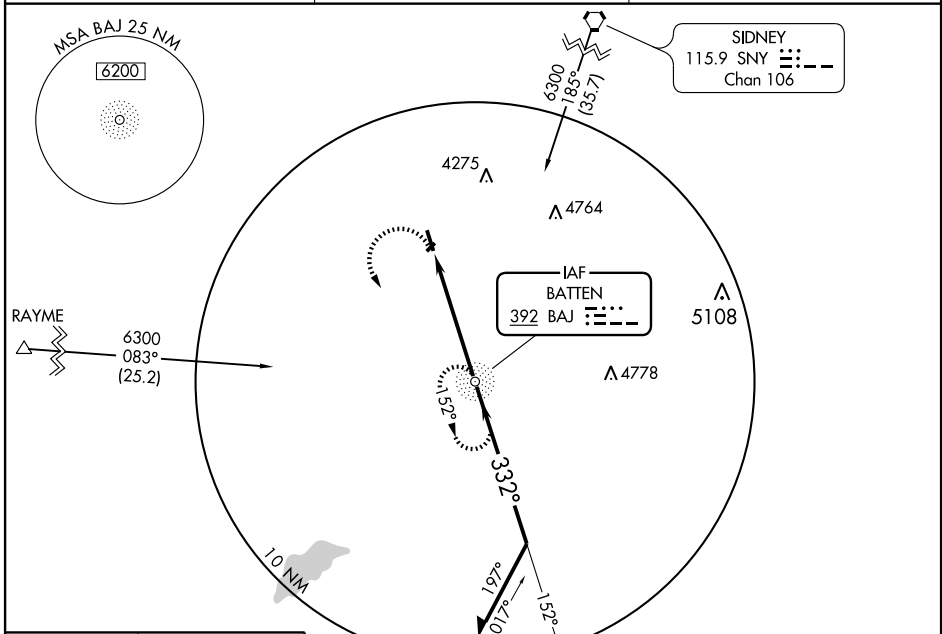
STERLING MUNI (STK)

NDB BAJ 392	APP CRS 332°	Rwy ldg 4708 TDZE 4033 Apt Elev 4038
-----------------------	------------------------	---

NA Obtain local altimeter setting on UNICOM 122.8 MHz. When not available:
 1. Use Akron, CO altimeter setting. 2. Increase all MDAs 100 feet.
 Approach not authorized when Sterling, CO or Akron, CO altimeter setting not available.

MISSED APPROACH: Climbing left turn to 6000 direct to BAJ NDB and hold.

AWOS-3 118.525	DENVER CENTER 118.475 225.4	UNICOM 122.8 (CTAF)
--------------------------	---------------------------------------	-------------------------------



CATEGORY	A	B	C	D
S-33	4460-1 427 (500-1)			4460-1½ 427 (500-1½)
CIRCLING	4460-1 423 (500-1)	4500-1 463 (500-1)	4500-1½ 463 (500-1½)	4600-2 563 (600-2)

SW-1, 22 OCT 2009 to 19 NOV 2009

SW-1, 22 OCT 2009 to 19 NOV 2009