

RNAV (GPS) RWY 25

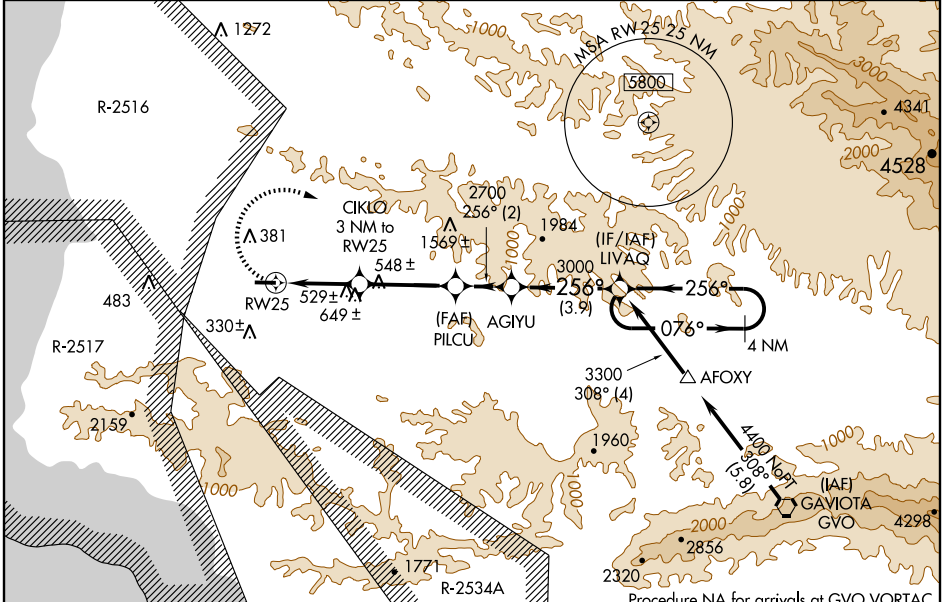
LOMPOC (LPC)

APP CRS	Rwy Idg	4600
256°	TDZE	88
	Apt Elev	88

⚠ DME/DME RNP-0.3 NA. When local altimeter setting not received, use Santa Maria Public/Captain G. Allan Hancock Field altimeter setting and increase all MDA 60 feet, and increase visibility LNAV and circling Cat B ¼ mile. VDP NA when using Santa Maria Public/Captain G. Allan Hancock Field altimeter setting.

MISSED APPROACH: Climbing right turn to 3300 direct LIVAQ and hold.

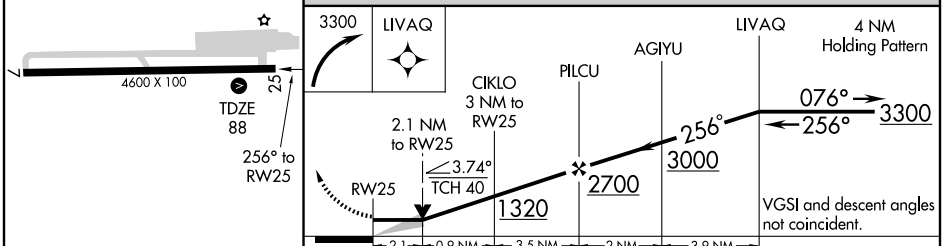
AWOS-3 133.875	SANTA BARBARA APP CON* 124.15 327.8	UNICOM 122.7 (CTAF) 📻
--------------------------	---	--



SW-3, 22 OCT 2009 to 19 NOV 2009

SW-3, 22 OCT 2009 to 19 NOV 2009

ELEV **88**



CATEGORY	A	B	C	D
LNAV MDA	780-1	692 (700-1)		NA
CIRCLING	780-1	692 (700-1)		NA