

RNAV (GPS) RWY 11

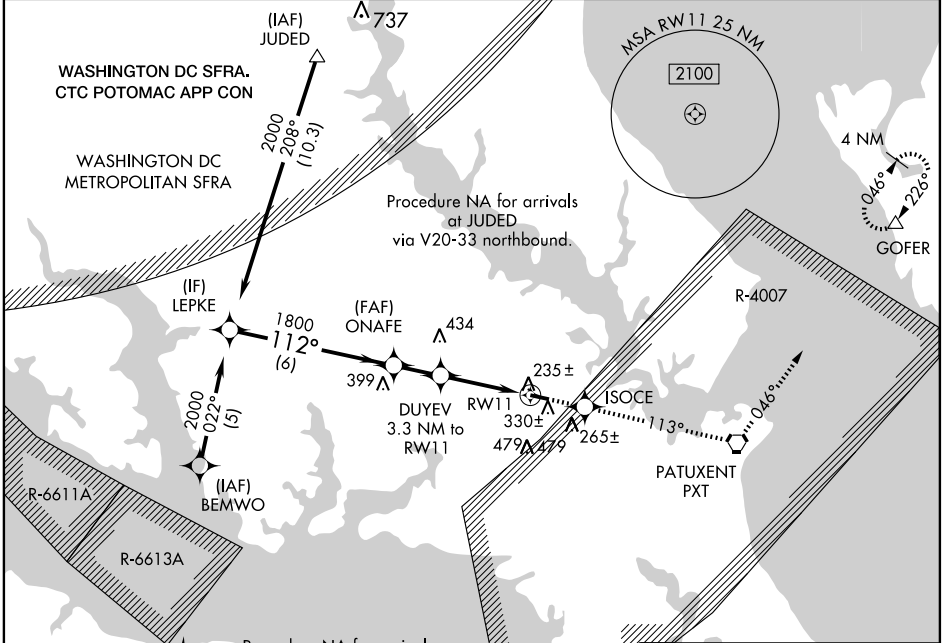
LEONARDTOWN/ ST. MARY'S COUNTY RGNL (2W6)

WAAS CH 70502 W11A	APP CRS 112°	Rwy Idg TDZE 142 Apt Elev 142	4150
--	------------------------	---	-------------

⚠ Circling to Rwy 29 NA at night. If local altimeter setting not received, use Patuxent River altimeter setting and increase all DAs/MDAs 40 feet. DME/DME RNP-0.3 NA. VDP NA with Patuxent River altimeter setting. Visibility reduction by helicopters NA.

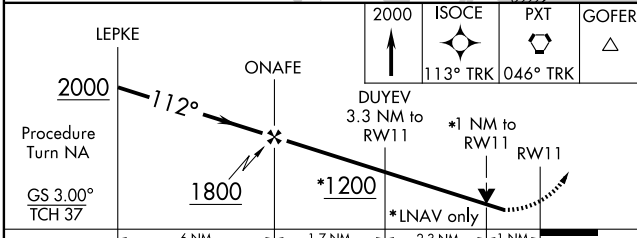
MISSED APPROACH: Climb to 2000 direct ISOCE and via 113° track to PXT VORTAC and 046° track to GOFER and hold.

AWOS-3 119.575	PATUXENT APP CON ★ 121.0 250.3	UNICOM 123.0 (CTAF) 0
--------------------------	--	---------------------------------



NE-3, 22 OCT 2009 to 19 NOV 2009

NE-3, 22 OCT 2009 to 19 NOV 2009



CATEGORY	A	B	C	D
LPV DA	440-1	298 (300-1)		NA
RNAV MDA	500-1	358 (400-1)		NA
CIRCLING	660-1	518 (600-1)		NA

ELEV 142

112° to RWY 11

TDZE 142

4150 X 75

0.4% UP

29

229±

REIL Rwy 11 and 29 0

MIRL Rwy 11-29 0

RNAV (GPS) RWY 11