

GRUVER, TEXAS

AL-6343 (FAA)

VOR/DME or GPS-A

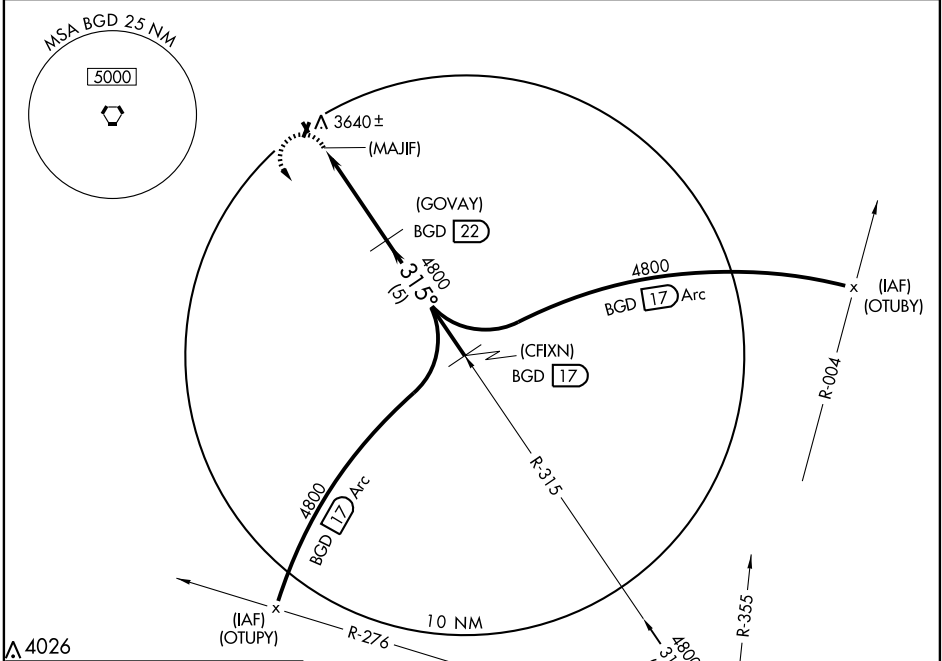
GRUVER/ CLUCK RANCH (2E3)

VORTAC BGD 108.6 Chan 23	APP CRS 315°	Rwy Idg TDZE Apt Elev	N/A N/A 3421
--	------------------------	-----------------------------	---

NA Use Dalhart altimeter setting; when not available, use Amarillo altimeter setting and increase all MDAs 40 feet.

MISSED APPROACH: Climbing left turn to 5000 direct BGD VORTAC and hold.

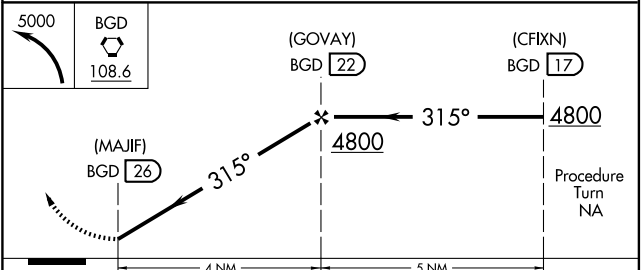
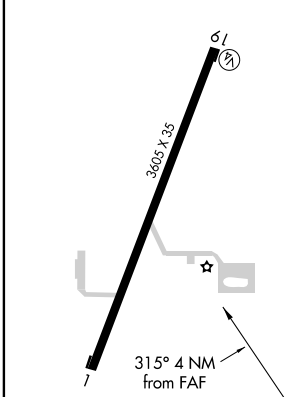
ALBUQUERQUE CENTER 127.85 285.475	(CTAF) 122.9
---	------------------------



SC-2, 22 OCT 2009 to 19 NOV 2009

SC-2, 22 OCT 2009 to 19 NOV 2009

4026
ELEV 3421 IIRL Rwy 1-19



		CATEGORY A		CATEGORY B		CATEGORY C		CATEGORY D	
Knots	60 90 120 150 180	4140-1	700 (700-1)	4140-1¼	700 (700-1¼)	NA			
Min:Sec									

GRUVER, TEXAS
Amdt 1 08045

36°11'N-101°42'W

VOR/DME or GPS-A

GRUVER/ CLUCK RANCH (2E3)