

GILMER, TEXAS

AL-6342 (FAA)

VOR/DME UIM 114.0 Chan 87	APP CRS 109°	Rwy Idg TDZE Apt Elev	N/A N/A 415
---	------------------------	-----------------------------	--

VOR/DME-A

GILMER/FOX STEPHENS FIELD-GILMER MUNI (JXI)

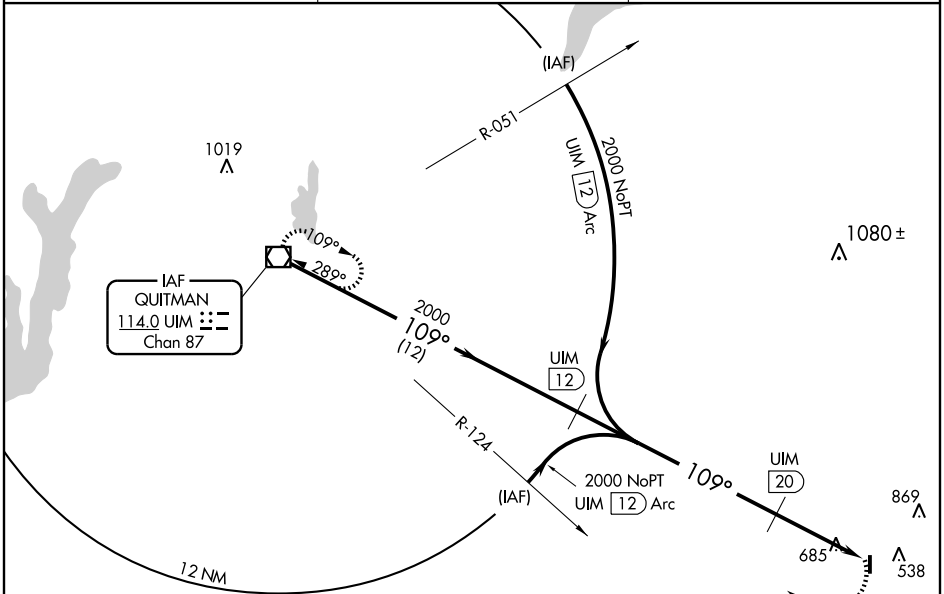
▲ NA Use Gregg County altimeter setting; when not received, procedure not authorized.

MISSED APPROACH: Climbing right turn to 2000 direct UIM VOR/DME and hold.

AWOS-3
118.2

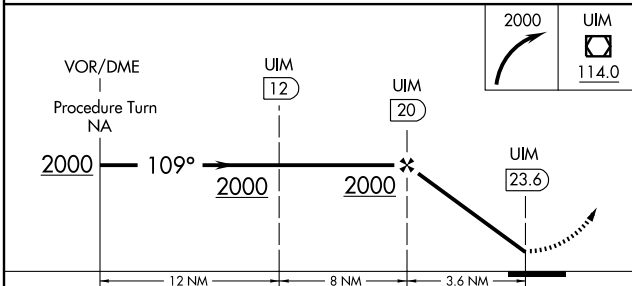
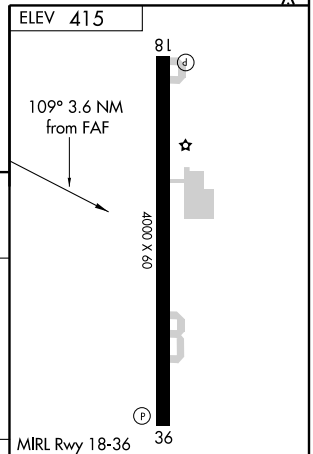
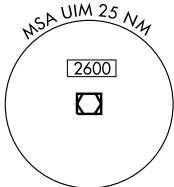
LONGVIEW APP CON *
118.25 270.3

CTAF
122.9



SC-2, 22 OCT 2009 to 19 NOV 2009

SC-2, 22 OCT 2009 to 19 NOV 2009



CATEGORY	A	B	C	D	Knots	60	90	120	150	180
CIRCLING	1180-1 765 (800-1)	1180-1¼ 765 (800-1¼)	1180-2¼ 765 (800-2¼)	NA	Min:Sec					

GILMER, TEXAS
Amdt 1A 07298

GILMER/ FOX STEPHENS FIELD-GILMER MUNI (JXI)
32°42'N-94°57'W

VOR/DME-A