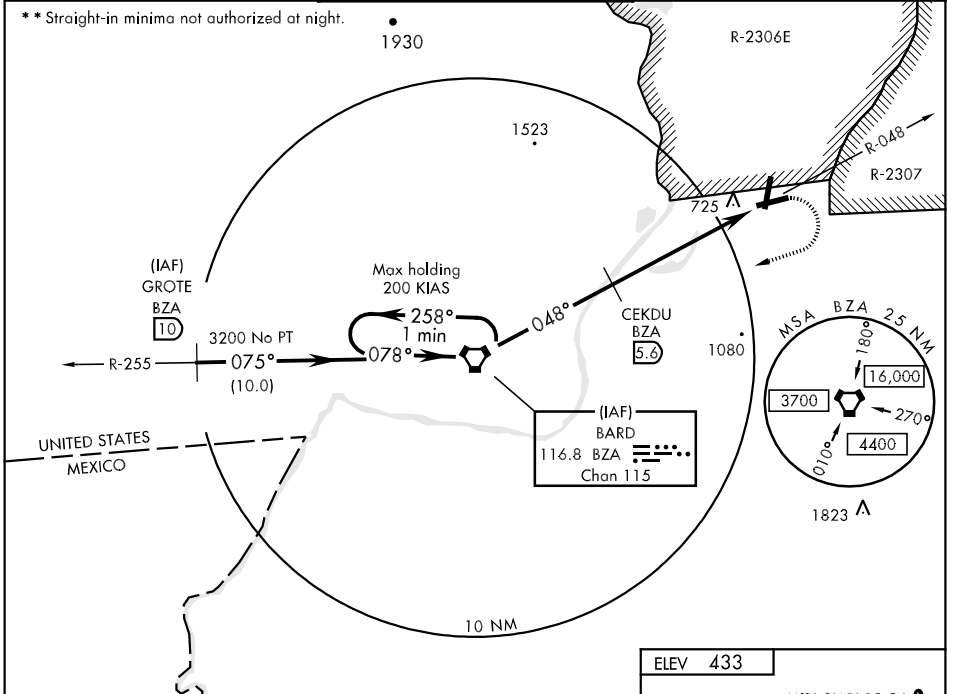


VORTAC BZA 116.8 Chan 115	APCH CRS 048°	Rwy Idg TDZE Arpt Elev 6000 379 433	AL-6341 [USA]	LAGUNA AAF (KLGf)
---	-------------------------	---	---------------	-------------------

▼ Procedure not authorized when airfield closed.
 ▲ NA Obtain local altimeter setting on CTAF. When not received, use Yuma MCAS Intl altimeter setting and increase all MDAs 80 feet, increase visibilities CAT BC ¼ mile, and circling CAT BC ¼ mile; DME minimums: increase CAT B ¼ mile, CAT CD ½ mile and circling CAT CD ¼ mile.

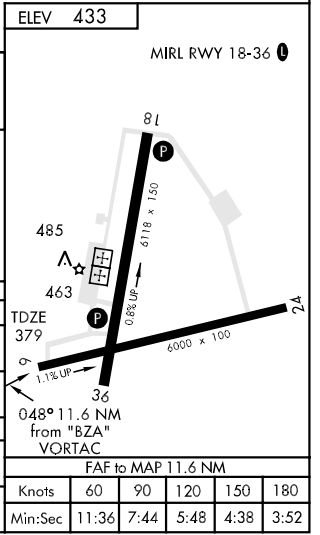
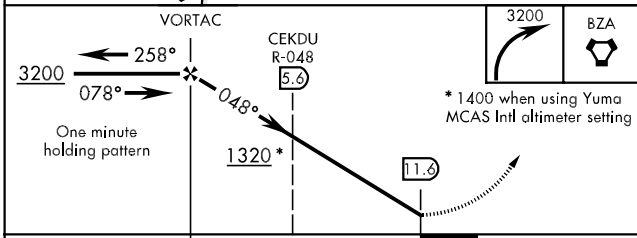
MISSED APPROACH: Climbing right turn to 3200 direct BZA VORTAC and hold.

YUMA APP CON 124.7 374.8	CTAF 126.20 242.175	GND CON 121.8 229.4
------------------------------------	-------------------------------	-------------------------------



SW-4, 22 OCT 2009 to 19 NOV 2009

SW-4, 22 OCT 2009 to 19 NOV 2009



CATEGORY	A	B	C	D
S-6 **	1320-1¼ 941 (1000-1¼)		1320-2¾ 941 (1000-2¾)	1320-3 941 (1000-3)
CIRCLING	1320-1¼ 898 (900-1¼)		1320-2¾ 898 (900-2¾)	1320-3 898 (900-3)
DME MINIMA				
S-6 **	1040-1 661 (700-1)		1040-1¼ 661 (700-1¼)	1040-2 661 (700-2)
CIRCLING	1080-1 658 (700-1)		1080-1¼ 658 (700-1¼)	1080-2 658 (700-2)