

APCH CRS **063°**  
 Rwy Idg **6000**  
 TDZE **387**  
 Arpt Elev **433**

AL-6341 [USA]

LAGUNA AAF (KLGf)

**▼** \* When local altimeter setting not received, use YUMA MCAS/YUMA Intl altimeter setting and increase all MDAs 80 feet, increase CAT CD vis 1/4 mile.  
**▲ NA** Procedure NA when airfield closed.

**MISSED APPROACH:** Climbing right turn to 3600 direct BZA VORTAC and hold.

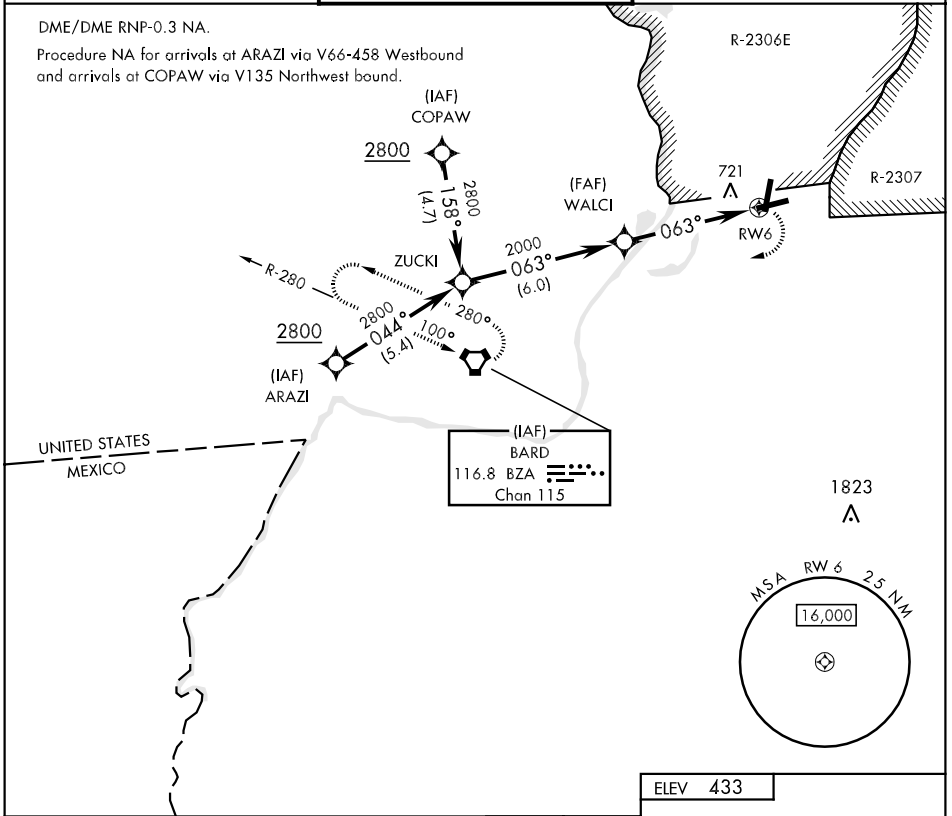
YUMA APP CON  
**124.7 374.8**

CTAF  
**126.20 242.175**

GND CON  
**121.8 229.4**

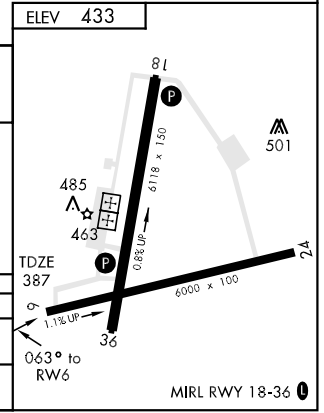
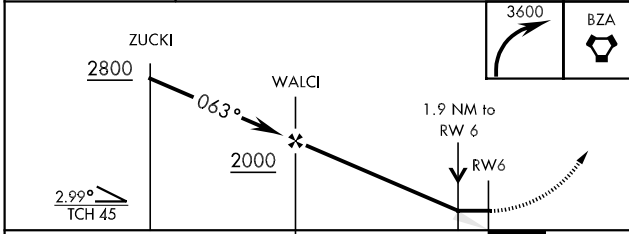
DME/DME RNP-0.3 NA.

Procedure NA for arrivals at ARAZI via V66-458 Westbound and arrivals at COPAW via V135 Northwest bound.



SW-4, 22 OCT 2009 to 19 NOV 2009

SW-4, 22 OCT 2009 to 19 NOV 2009



CATEGORY	A	B	C	D
LNVA MDA *	1020-1 633 (600-1)	633 (600-1)	1020-1 1/4 633 (600-1 1/4)	1020-2 633 (600-2)
CIRCLING *	1080-1 647 (700-1)	647 (700-1)	1080-1 1/4 647 (700-1 1/4)	1080-2 647 (700-2)