

APCH CRS **163°** Rwy Idg **6118**
 TDZE **410**
 Arpt Elev **433**

AL-6341 [USA]

LAGUNA AAF (KLGf)

▼ * When local altimeter setting not received, use YUMA MCAS/
 YUMA Intl altimeter setting and increase all MDAs 80 feet and
▲ NA LNAV CAT D and circling CAT CD vis ¼ mile.

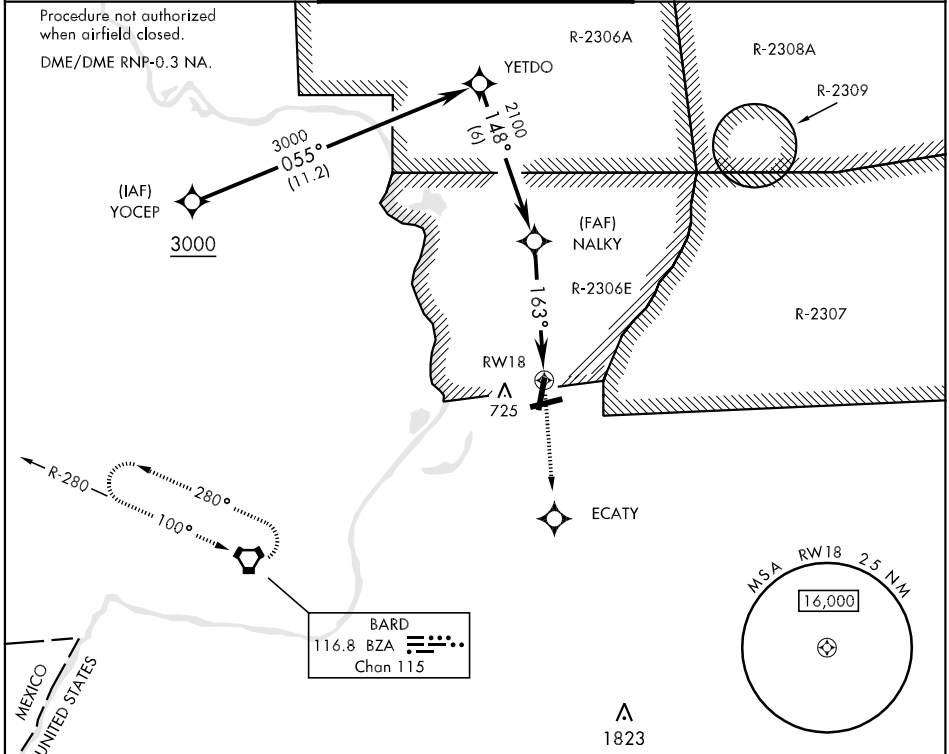
MISSED APPROACH: Climb to 3600 direct
 ECATY, via 250° track to BZA VORTAC
 and hold, continue climb in hold to 3600.

YUMA APP CON
124.7 374.8

CTAF
126.20 242.175

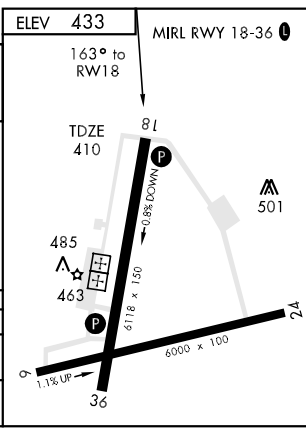
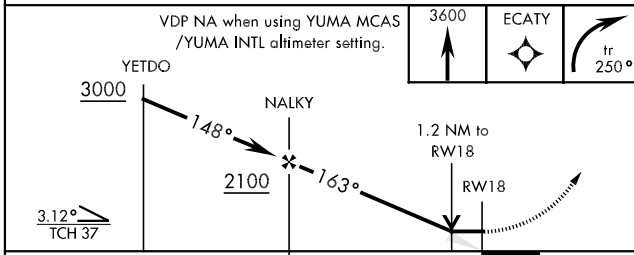
GND CON
121.8 0 229.4

Procedure not authorized
 when airfield closed.
 DME/DME RNP-0.3 NA.



SW-4, 22 OCT 2009 to 19 NOV 2009

SW-4, 22 OCT 2009 to 19 NOV 2009



CATEGORY	A	B	C	D
LNAV MDA *	820-1	410 (400-1)	820-1 ¼	410 (400-1 ¼)
CIRCLING *	1080-1	647 (700-1)	1080-1 ¼	1080-2
			647 (700-1 ¼)	647 (700-2)