

WAAS CH 77699 W17A	APP CRS 176°	Rwy Idg TDZE 474 Apt Elev 474	5006
--	------------------------	---	-------------

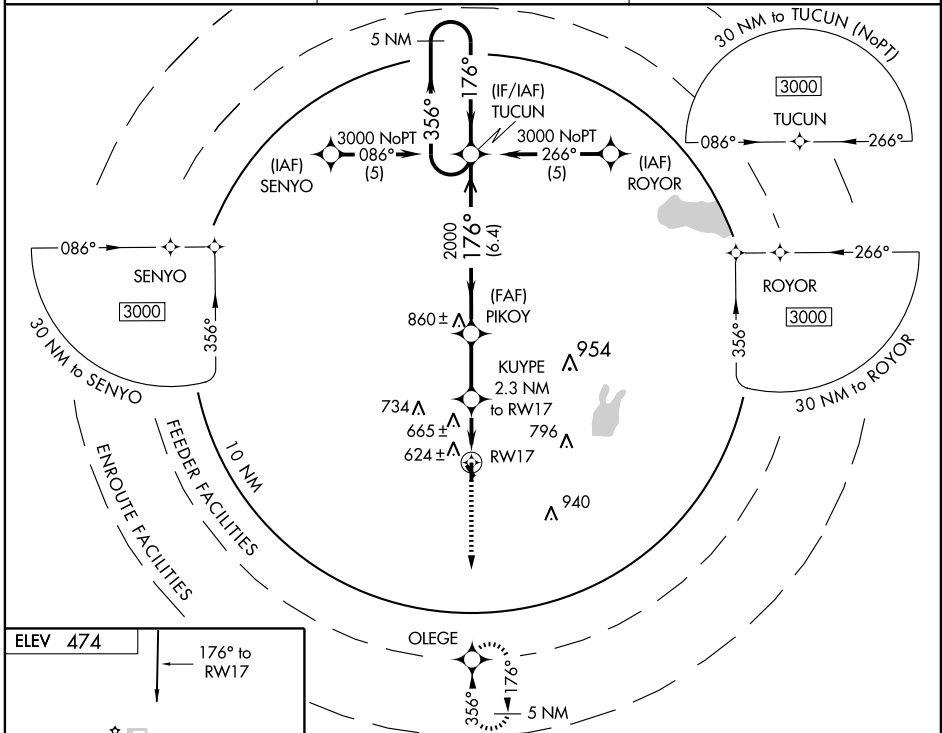
RNAV (GPS) RWY 17

TERRELL MUNI (TRL)

▼ When VGSI inoperative, straight-in/circling Rwy 17 procedure NA at night. If local altimeter setting not received, use Dallas-Love Field altimeter setting and increase all DAs 73 feet and all MDAs 80 feet. Baro-VNAV NA when using Dallas-Love Field altimeter setting. BARO-VNAV NA below -1.5°C (5°F). DME/DME RNP-0.3 NA.

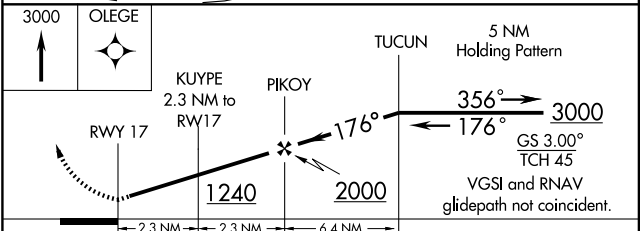
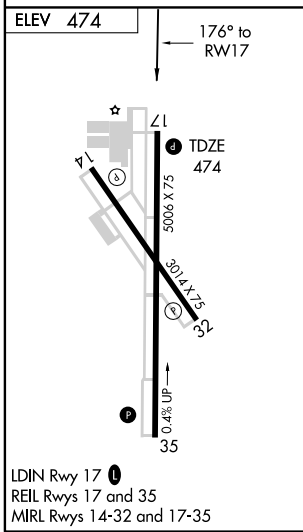
▲ MISSED APPROACH: Climb to 3000 direct OLEGE and hold.

ASOS 119.275	FORT WORTH CENTER 132.85 397.9	UNICOM 122.8 (CTAF) 0
------------------------	--	---------------------------------



SC-2, 22 OCT 2009 to 19 NOV 2009

SC-2, 22 OCT 2009 to 19 NOV 2009



CATEGORY	A	B	C	D
LPV DA		756-1 282 (300-1)		NA
LNAV/VNAV DA		983-1¼ 509 (600-1¼)		NA
LNAV MDA	920-1 446 (500-1)		920-1¼ 446 (500-1¼)	NA
CIRCLING		1000-1¼ 526 (600-1¼)		NA