

TERRELL, TEXAS

AL-6340 (FAA)

NDB RWY 17

TERRELL MUNI (TRL)

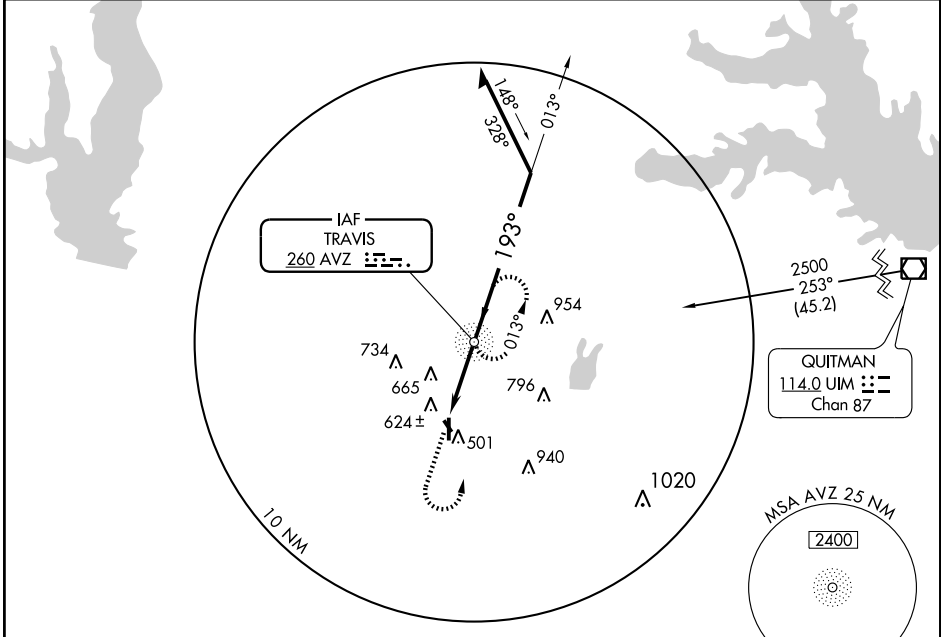
NDB AVZ	APP CRS	Rwy Idg	5006
260	193°	TDZE	474
		Apt Elev	474

▽ When VGSI inoperative, straight-in/circling Rwy 17 procedure not authorized at night. If local altimeter setting not received, use Dallas-Love Field altimeter setting and increase all MDAs 80 feet.

△ NA

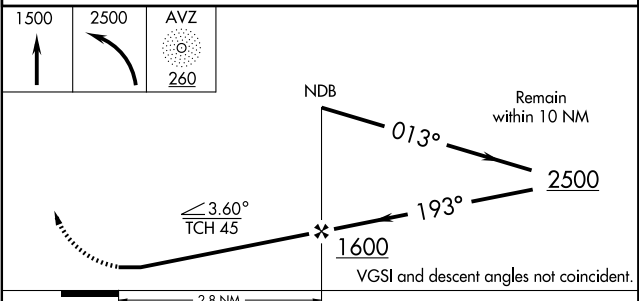
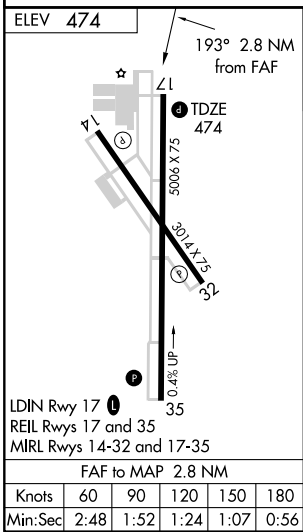
MISSED APPROACH: Climb to 1500 then climbing left turn to 2500 direct AVZ NDB and hold.

ASOS 119.275	FORT WORTH CENTER 132.85 397.9	UNICOM 122.8 (CTAF) ☺
------------------------	--	--



SC-2, 22 OCT 2009 to 19 NOV 2009

SC-2, 22 OCT 2009 to 19 NOV 2009



CATEGORY	A	B	C	D
S-17	980-1	506 (600-1)	980-1½ 506 (600-1½)	NA
CIRCLING	980-1	506 (600-1)	980-1½ 506 (600-1½)	NA

TERRELL, TEXAS
Amdt 4 08101

32° 43' N-96° 16' W

TERRELL MUNI (TRL)

NDB RWY 17