

RIPLEY, MISSISSIPPI

AL-6339 (FAA)

VOR/DME-A
RIPLEY (25M)

VORTAC HLI 112.4 Chan 71	APP CRS 094°	Rwy Idg TDZE Apt Elev 467	N/A N/A 467
--	------------------------	---	--

▼ Use Corinth altimeter setting, if not received, use Tupelo altimeter setting and increase all MDAs 40 feet.
▲ NA

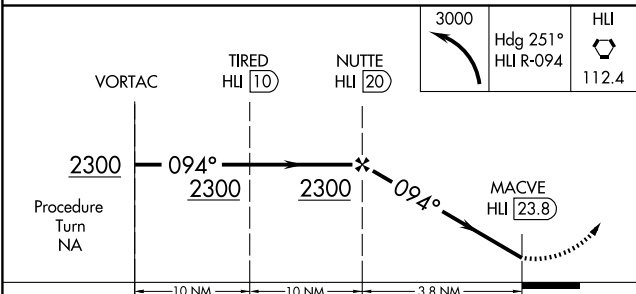
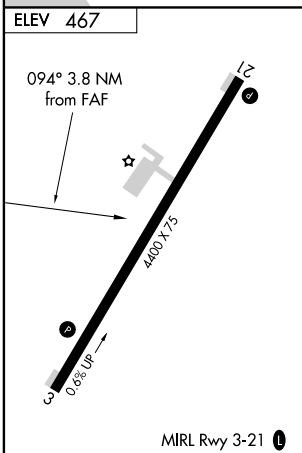
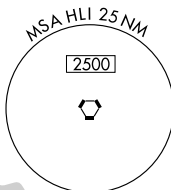
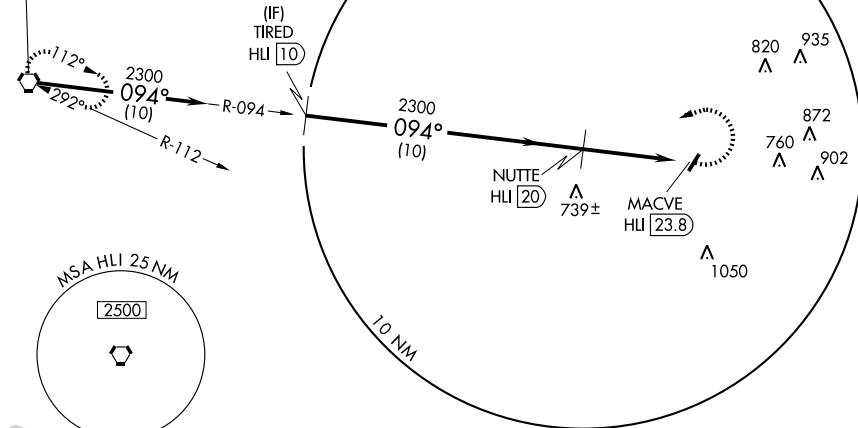
MISSED APPROACH: Climbing left turn to 3000 via heading 251° and HLI VORTAC R-094 to HLI VORTAC and hold.

MEMPHIS CENTER
135.9 260.6

UNICOM
122.8 (CTAF)

Procedure NA for arrivals on HLI VORTAC
airway radials 045 CW 112.

IAF
HOLLY SPRINGS
112.4 HLI
Chan 71



CATEGORY	A	B	C	D
Knots	60	90	120	150
Min:Sec				
CIRCLING	1060-1 593 (600-1)	1060-1¼ 593 (600-1¼)	1080-1¾ 613 (700-1¾)	1100-2 633 (700-2)

RIPLEY, MISSISSIPPI
Amdt 2 08101

34°43' N-89°01' W

RIPLEY (25M)
VOR/DME-A

SC-4, 22 OCT 2009 to 19 NOV 2009

SC-4, 22 OCT 2009 to 19 NOV 2009