

CRAIG, COLORADO

AL-6338 (FAA)

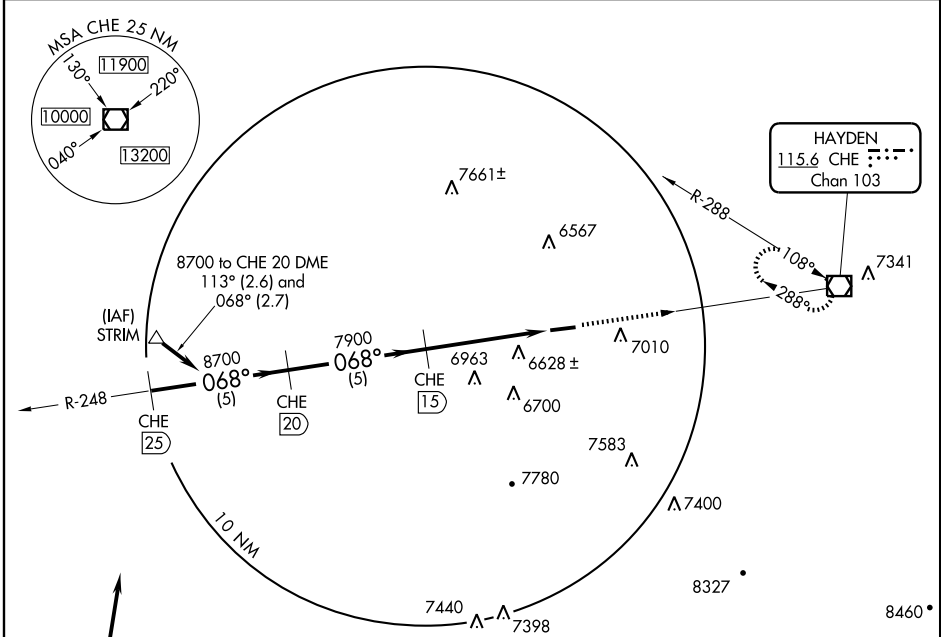
VOR/DME RWY 7

CRAIG-MOFFAT (CAG)

VOR/DME CHE 115.6 Chan 103	APP CRS 068°	Rwy Idg TDZE Apt Elev	5600 6193 6193
--	------------------------	-----------------------------	---

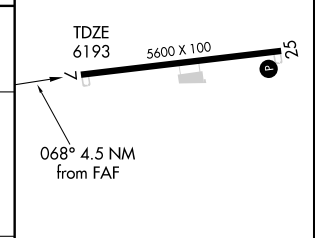
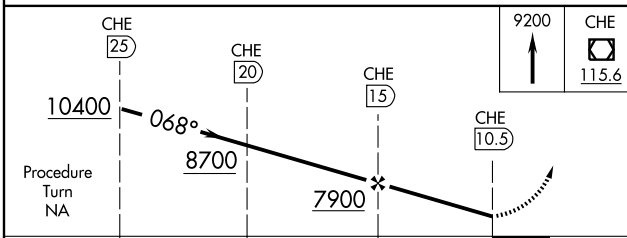
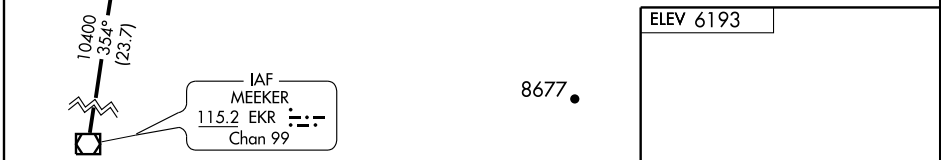
▽
▲ MISSED APPROACH: Climb to 9200 direct CHE VOR/DME and hold.

ASOS 135.425	DENVER CENTER 120.475 235.975	UNICOM 122.8 (CTAF) ①
------------------------	---	--



SW-1, 22 OCT 2009 to 19 NOV 2009

SW-1, 22 OCT 2009 to 19 NOV 2009



CATEGORY	A	B	C	D
S-7	7220-1½ 1027 (1100-1¼)	7220-1½ 1027 (1100-1½)	7220-3	1027 (1100-3)
CIRCLING	7220-1¼ 1027 (1100-1¼)	7320-1½ 1127 (1200-1½)	7420-3	1227 (1300-3)

REIL Rwys 7 and 25 **①**
MIRL Rwy 7-25 **①**

Knots	60	90	120	150	180
Min:Sec					

CRAIG, COLORADO
Amdt 2B 07018

40°30'N-107°31'W

CRAIG-MOFFAT (CAG)

VOR/DME RWY 7