

CRAIG, COLORADO

AL-6338 (FAA)

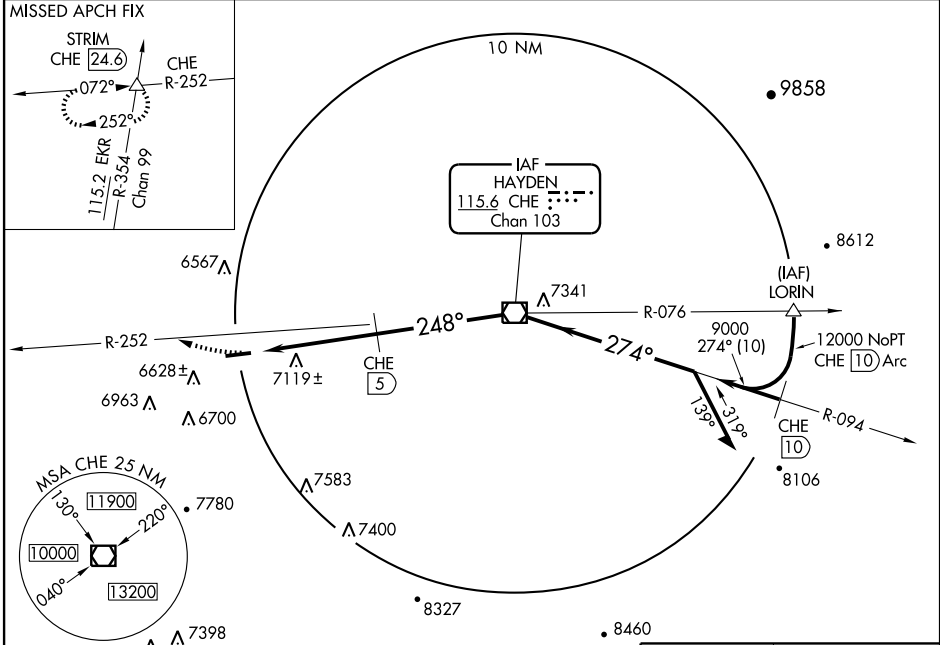
VOR RWY 25

CRAIG-MOFFAT (CAG)

VOR/DME CHE 115.6 Chan 103	APP CRS 248°	Rwy Idg 5600 TDZE 6192 Apt Elev 6193
--	------------------------	---

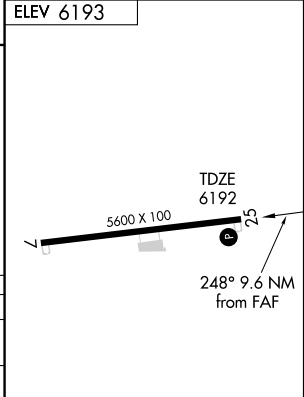
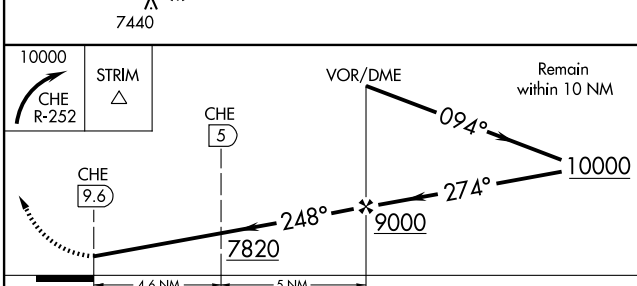
MISSED APPROACH: Climbing right to 10000 via CHE R-252 to STRIM Int and hold.

ASOS 135.425	DENVER CENTER 120.475 235.975	UNICOM 122.8 (CTAF)
------------------------	---	-------------------------------



SW-1, 22 OCT 2009 to 19 NOV 2009

SW-1, 22 OCT 2009 to 19 NOV 2009



CATEGORY	A		B		C		D	
	Altitude	Altitude	Altitude	Altitude	Altitude	Altitude	Altitude	
S-25	7820-1¼ 1628 (1700-1¼)	7820-1½ 1628 (1700-1½)	7820-3	1628 (1700-3)				
CIRCLING	7820-1¼ 1627 (1700-1¼)	7820-1½ 1627 (1700-1½)	7820-3	1627 (1700-3)				
DME MINIMA								
S-25	7380-1¼ 1188 (1200-1¼)	7380-1½ 1188 (1200-1½)	7380-3	1188 (1200-3)				
CIRCLING	7380-1¼ 1187 (1200-1¼)	7380-1½ 1187 (1200-1½)	7420-3	1227 (1300-3)				

REIL Rwys 7 and 25
MIRL Rwy 7-25

FAF to MAP 9.6 NM

Knots	60	90	120	150	180
Min:Sec	9:36	6:24	4:48	3:50	3:12

CRAIG, COLORADO
Amdt 3A 07018

40°30'N-107°31'W

CRAIG-MOFFAT (CAG)

VOR RWY 25