

CRAIG, COLORADO

AL-6338 (FAA)

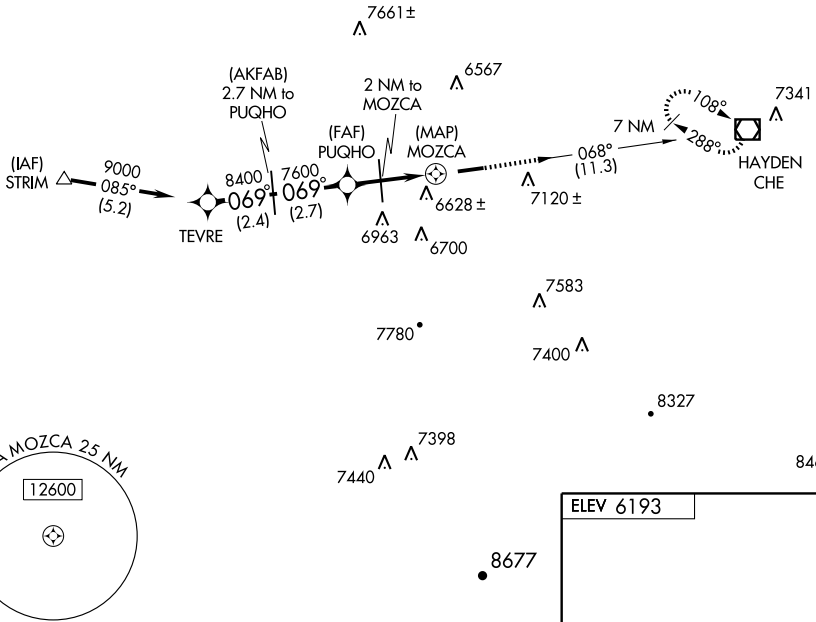
GPS RWY 7 CRAIG-MOFFAT (CAG)

APP CRS 069°	Rwy Idg 5600
	TDZE 6188
	Apt Elev 6193

MISSED APPROACH: Climb to 10000 via 068° course to CHE VOR/DME and hold.

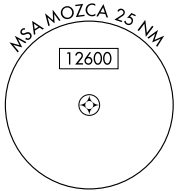
<p>▽ ▲ NA</p>

ASOS 135.425	DENVER CENTER 120.475 235.975	UNICOM 122.8 (CTAF)
------------------------	-----------------------------------------	-------------------------------

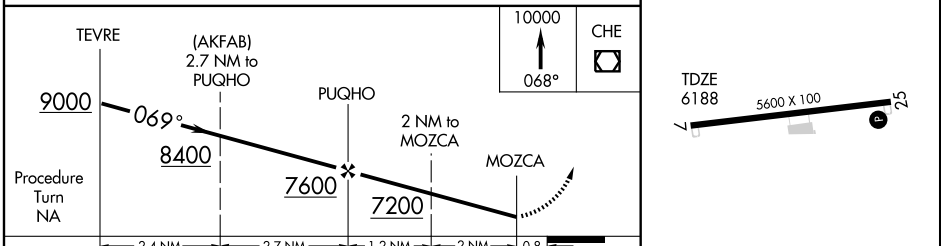


SW-1, 22 OCT 2009 to 19 NOV 2009

SW-1, 22 OCT 2009 to 19 NOV 2009



ELEV 6193



CATEGORY	A	B	C	D
S-7	6940-1 752 (800-1)	6940-1¼ 752 (800-1¼)	6940-2¼ 752 (800-2¼)	6940-2½ 752 (800-2½)
CIRCLING	7220-1¼ 1027 (1100-1¼)	7320-1½ 1127 (1200-1½)	7420-3	1227 (1300-3)

REIL Rwys 7 and 25
MIRL Rwy 7-25

CRAIG, COLORADO
Orig 07130

40°30'N-107°31'W

CRAIG-MOFFAT (CAG) GPS RWY 7