

CRAIG, COLORADO

AL-6338 (FAA)

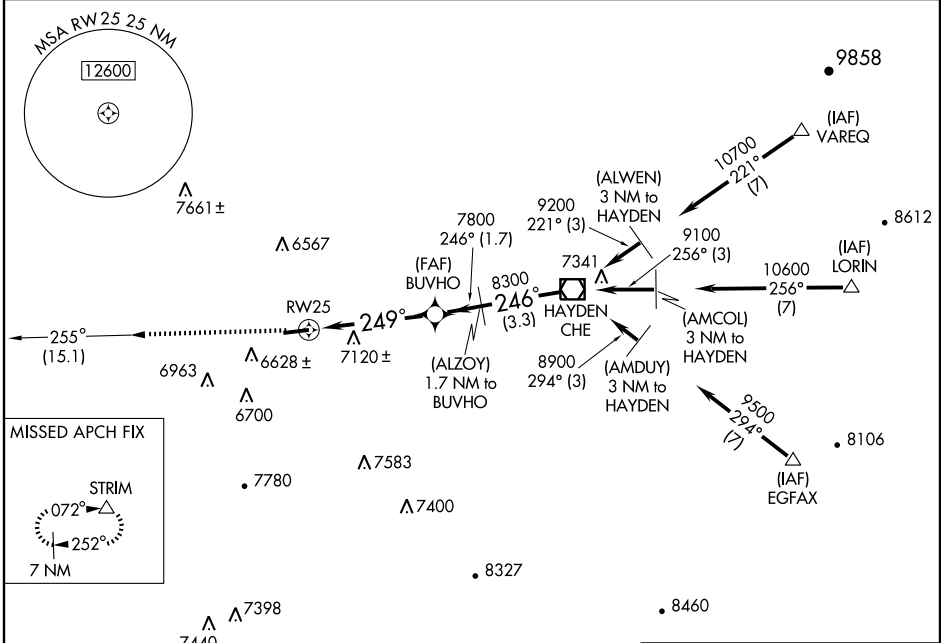
GPS RWY 25

CRAIG-MOFFAT (CAG)

APP CRS	Rwy Idg	5600
249°	TDZE	6193
	Apt Elev	6193

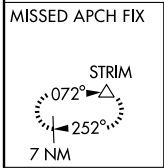
MISSED APPROACH: Climb to 10000 via 255° course to STRIM WP and hold.

ASOS 135.425	DENVER CENTER 120.475 235.975	UNICOM 122.8 (CTAF)
------------------------	---	-------------------------------

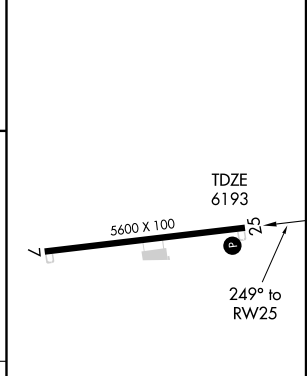
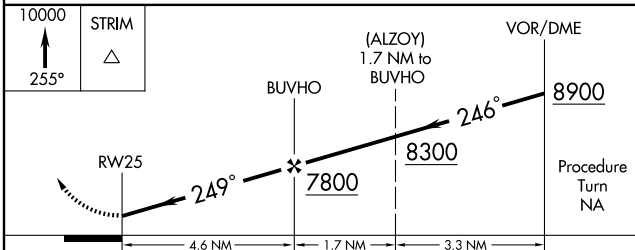


SW-1, 22 OCT 2009 to 19 NOV 2009

SW-1, 22 OCT 2009 to 19 NOV 2009



ELEV 6193



CATEGORY	A	B	C	D
S-25	7380-1¼ 1187 (1200-1¼)	7380-1½ 1187 (1200-1½)	7380-3	1187 (1200-3)
CIRCLING	7380-1¼ 1187 (1200-1¼)	7380-1½ 1187 (1200-1½)	7420-3	1227 (1300-3)

REIL Rwys 7 and 25 **1**
MIRL Rwy 7-25 **1**

CRAIG, COLORADO
Orig 08269

40°30'N-107°31'W

CRAIG-MOFFAT (CAG)

GPS RWY 25