

GREENCASTLE, INDIANA

AL-6336 (FAA)

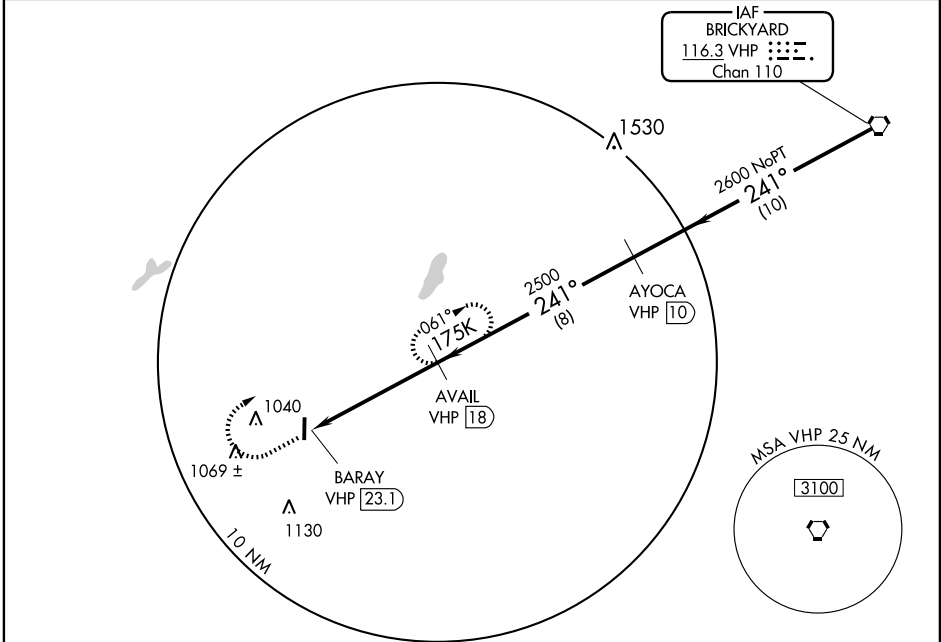
VOR/DME-A

GREENCASTLE / PUTNAM COUNTY (4I7)

VORTAC VHP 116.3 Chan 110	APP CRS 241°	Rwy Idg TDZE Apt Elev	N/A N/A 842
---	------------------------	-----------------------------	--

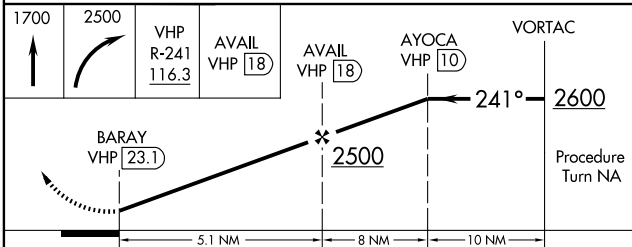
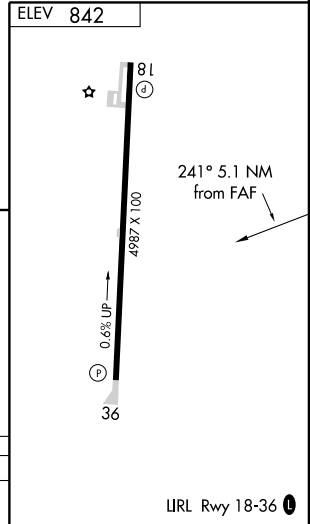
▼ MISSED APPROACH: Climb to 1700 then climbing right turn to 2500 via VHP R-241 to AVAIL/18 DME and hold.
▲ NA

AWOS-3 118.125	INDIANAPOLIS APP CON 119.05	UNICOM 122.8 (CTAF) 0
--------------------------	---------------------------------------	--



EC-2, 22 OCT 2009 to 19 NOV 2009

EC-2, 22 OCT 2009 to 19 NOV 2009



CATEGORY	A	B	C	D
CIRCLING	1420-1 578 (600-1)	1420-1¼ 578 (600-1¼)	NA	

GREENCASTLE, INDIANA
Amdt 6 09071

39°38'N - 86°49'W

GREENCASTLE / PUTNAM COUNTY (4I7)

VOR/DME-A

IIRL Rwy 18-36 **0**