

RNAV (GPS) RWY 36

GREENCASTLE / PUTNAM COUNTY (4I7)

| | | |
|---------------------------------|------------------------|---|
| WAAS CH 40306 W36A | APP CRS 004° | Rwy Idg 4987 TDZE 829 Apt Elev 842 |
|---------------------------------|------------------------|---|

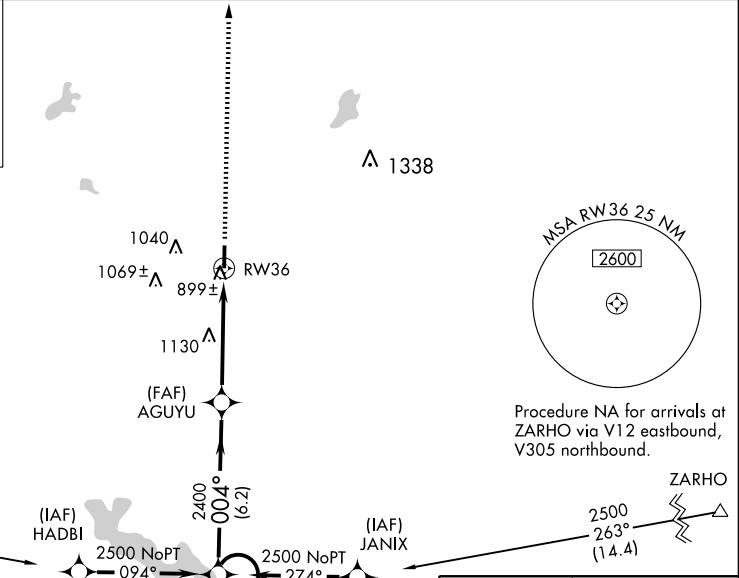
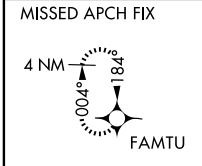
Baro-VNAV NA when using Indianapolis Intl altimeter setting.
 For uncompensated Baro-VNAV systems, LNAV/VNAV NA below -16°C (4°F) or above 54°C (130°F). Visibility reduction by helicopters NA.
 DME/DME RNP-0.3 NA. When local altimeter setting not received, use Indianapolis Intl altimeter setting and increase all DAs/MDAs 80 feet and increase LPV visibility ¼ mile all Cats, LNAV/VNAV visibility ¼ mile all Cats.
 VDP NA when using Indianapolis Intl altimeter setting.

MISSED APPROACH: Climb to 2500 direct FAMTU and hold.

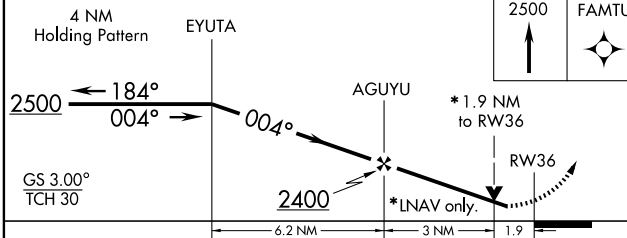
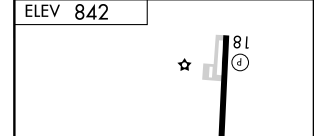
AWOS-3
118.125

INDIANAPOLIS APP CON
119.05

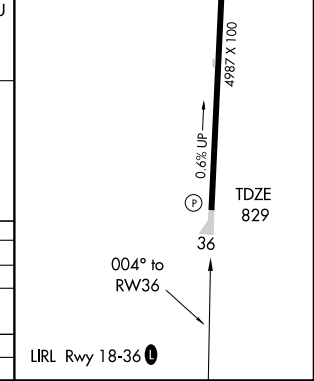
UNICOM
122.8 (CTAF) 0



Procedure NA for arrivals on TTH VORTAC airway radials 062 CW 134.



| CATEGORY | A | B | C | D |
|--------------|---------|--------------|---|----|
| LPV DA | 1123-1¼ | 294 (300-1½) | | NA |
| LNAV/VNAV DA | 1242-1½ | 413 (400-1½) | | NA |
| LNAV MDA | 1440-1 | 611 (600-1) | | NA |
| CIRCLING | 1440-1 | 598 (600-1) | | NA |



EC-2, 22 OCT 2009 to 19 NOV 2009

EC-2, 22 OCT 2009 to 19 NOV 2009