

GREENCASTLE, INDIANA

AL-6336 (FAA)

NDB RWY 18

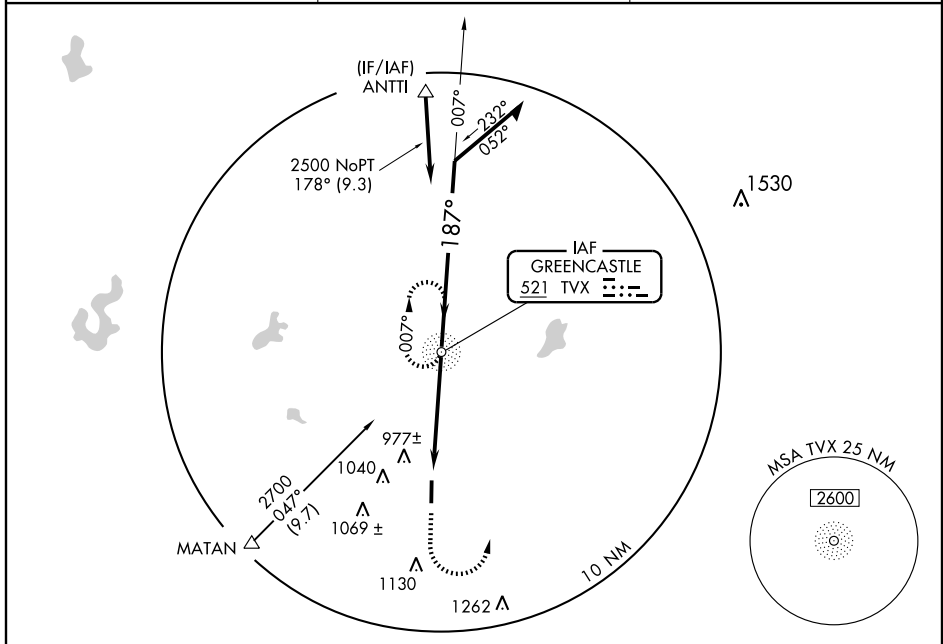
GREENCASTLE/PUTNAM COUNTY (4I7)

NDB TVX 521	APP CRS 187°	Rwy Idg 4987
	TDZE 842	
	Apt Elev 842	

▼ If local altimeter setting not received, use Indianapolis
▲ NA Intl altimeter setting and increase all MDAs 80 feet.

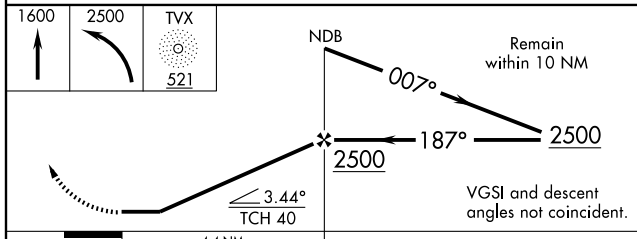
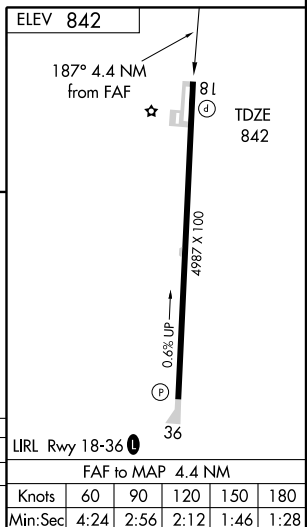
MISSED APPROACH: Climb to 1600 then climbing left turn to 2500 direct TVX NDB and hold.

AWOS-3 118.125	INDIANAPOLIS APP CON 119.05	UNICOM 122.8 (CTAF) 0
--------------------------	---------------------------------------	---------------------------------



EC-2, 22 OCT 2009 to 19 NOV 2009

EC-2, 22 OCT 2009 to 19 NOV 2009



CATEGORY	A	B	C	D
S-18	1280-1	438 (500-1)		NA
CIRCLING	1280-1 438 (500-1)	1300-1 458 (500-1)		NA

LIRL Rwy 18-36 0	FAF to MAP 4.4 NM				
Knots	60	90	120	150	180
Min:Sec	4:24	2:56	2:12	1:46	1:28

GREENCASTLE, INDIANA

Amdt 1 08213

39°38'N - 86°49'W

GREENCASTLE/PUTNAM COUNTY (4I7)

NDB RWY 18