

RNAV (GPS) RWY 30

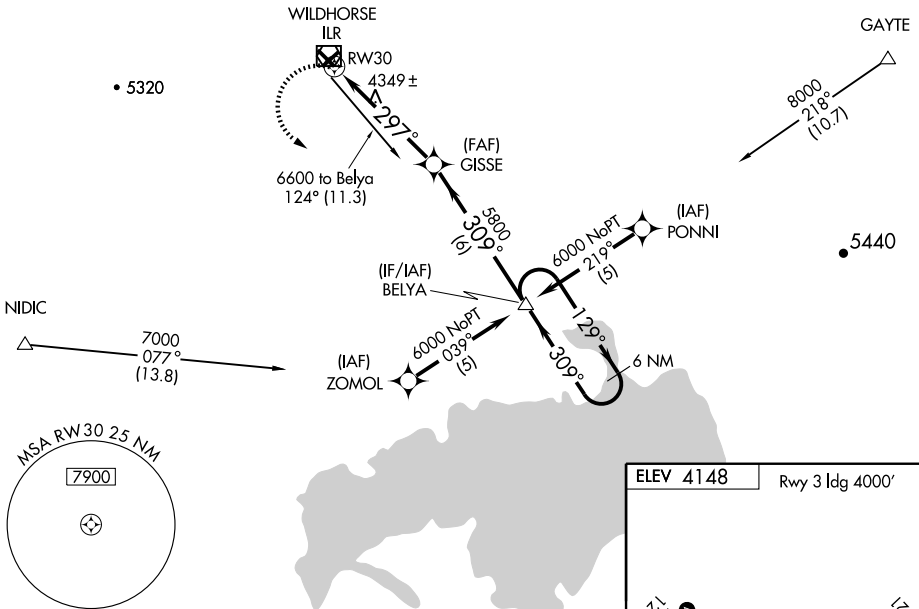
BURNS MUNI (BNO)

APP CRS 297°	Rwy Idg 5100
	TDZE 4148
	Apt Elev 4148

<p>▽ NA DME/DME RNP- 0.3 NA.</p>	<p>MISSED APPROACH: Climbing left turn to 6000 direct BELYA and hold.</p>
---	---

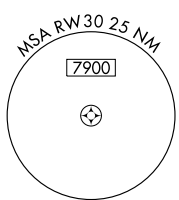
<p>ASOS 135.575</p>	<p>MINNVILLE RADIO 122.5</p>	<p>UNICOM 122.8 (CTAF) 0</p>
--------------------------------	---	---

Procedure NA for arrival at NIDIC via V357 southwestbound.
 Procedure NA for arrival at GAYTE via V330 eastbound.
 NoPT for arrival at ILR VOR/DME via V497 northwestbound.

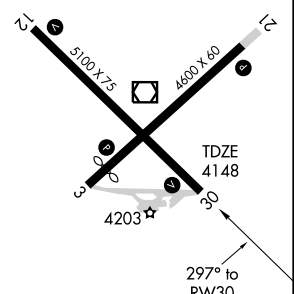
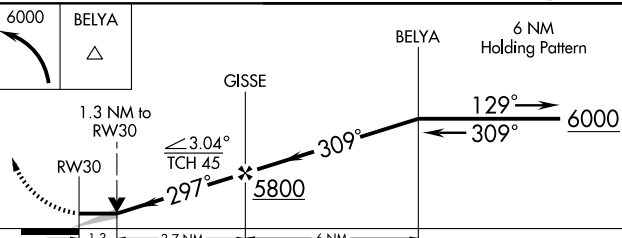


NW-1, 22 OCT 2009 to 19 NOV 2009

NW-1, 22 OCT 2009 to 19 NOV 2009



ELEV 4148	Rwy 3 Idg 4000'
-----------	-----------------



CATEGORY	A	B	C	D
LNVA MDA	4600-1	452 (500-1)	4600-1½ 452 (500-1½)	4600-1½ 452 (500-1½)
CIRCLING	4600-1 452 (500-1)	4680-1 532 (600-1)	4680-1½ 532 (600-1½)	4720-2 572 (600-2)

REIL Rwy 3, 12, 21 and 30 0
 MIRL Rwy 3-21 and 12-30 0