

VORTAC GSO <b>116.2</b> Chan <b>109</b>	APP CRS <b>018°</b>	Rwy Idg TDZE Apt Elev <b>N/A</b> <b>N/A</b> <b>693</b>
---	------------------------	---

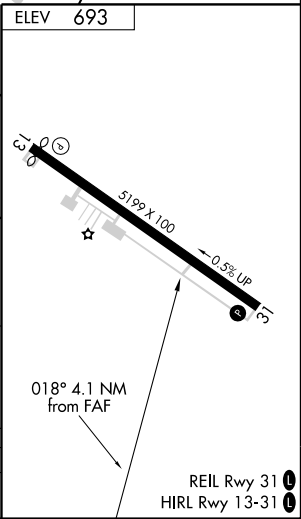
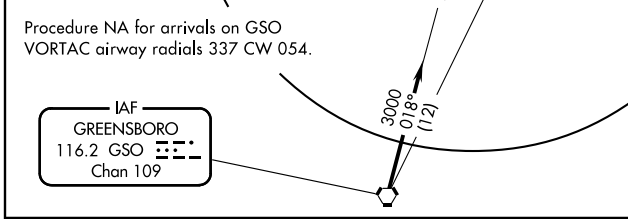
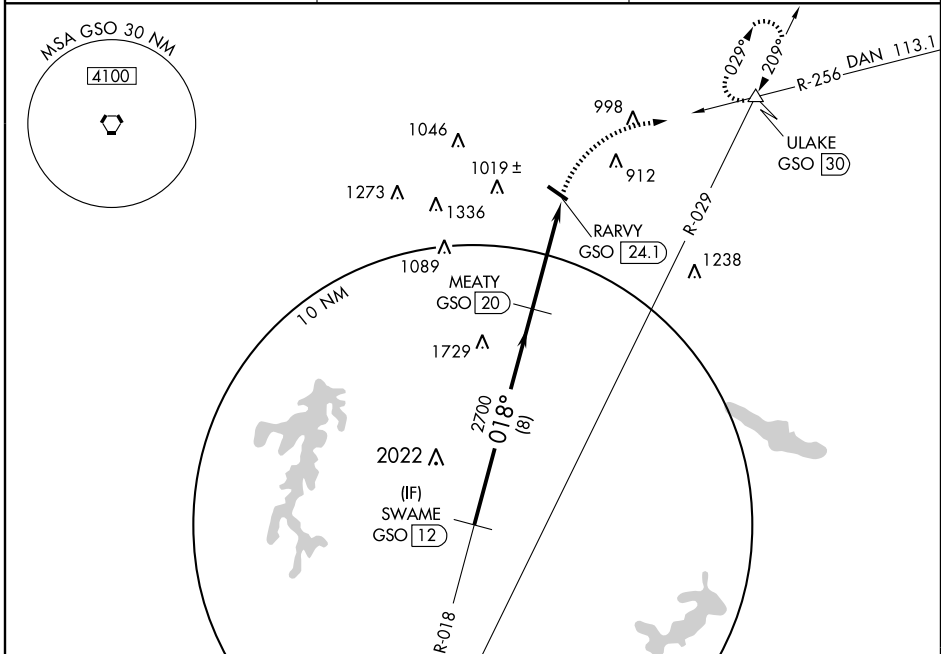
# VOR/DME-A

REIDSVILLE/ROCKINGHAM COUNTY NC SHILOH (SIF)

**NA** Visibility reduction by helicopters NA. When local altimeter setting not received use Greensboro altimeter setting and increase MDA 100 feet and increase Cats C and D visibility ¼ mile.

**MISSED APPROACH:** Climbing right turn to 3100 via DAN VOR R-256 to ULAKE/GSO 30 DME and hold.

AWOS-3 <b>119.775</b>	GREENSBORO APP CON <b>124.35 269.225</b>	UNICOM <b>122.8 (CTAF) 0</b>
--------------------------	---	---------------------------------



	3100	DAN R-256 113.1	ULAKE GSO 30
Procedure Turn NA	3000	MEATY GSO 20	RARVY GSO 24.1
	8 NM	4.1 NM	

CATEGORY	A	B	C	D
CIRCLING	1400-1 707 (800-1)	1400-1¼ 707 (800-1¼)	1400-2 707 (800-2)	1400-2¼ 707 (800-2¼)

SE-2, 22 OCT 2009 to 19 NOV 2009

SE-2, 22 OCT 2009 to 19 NOV 2009