

NDB SIF	APP CRS	Rwy Idg	5199
423	315°	TDZE	668
		Apt Elev	694

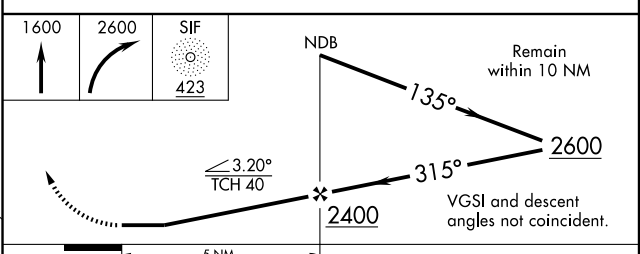
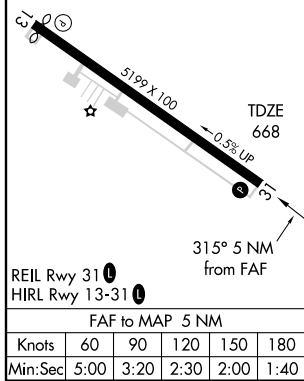
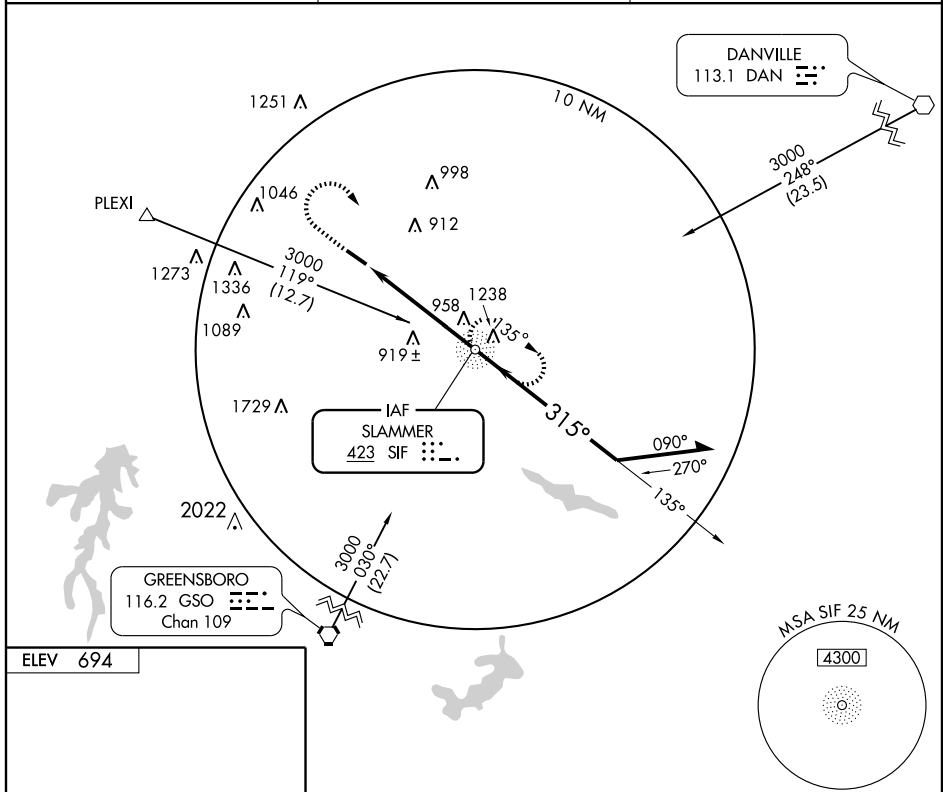
NDB RWY 31

REIDSVILLE/ ROCKINGHAM COUNTY NC SHILOH (SIF')

⚠ Visibility reduction by helicopters NA. When local altimeter setting not received use Greensboro altimeter setting and increase all MDA 100 feet, increase S-31 Cats C and D and Circling Cats C and D visibility ¼ mile.

⚠ MISSED APPROACH: Climb to 1600 then climbing right turn to 2600 direct SIF NDB and hold.

AWOS-3 119.775	GREENSBORO APP CON 124.35 269.225	UNICOM 122.8 (CTAF) 0
--------------------------	---	---------------------------------



REIL Rwy 31 0		HIRL Rwy 13-31 0		FAF to MAP 5 NM	
Knots	60	90	120	150	180
Min:Sec	5:00	3:20	2:30	2:00	1:40

CATEGORY	A	B	C	D
S-31	1220-1	552 (600-1)	1220-1½ 552 (600-1½)	1220-1¾ 552 (600-1¾)
CIRCLING	1260-1 566 (600-1)	1280-1 586 (600-1)	1320-1¾ 626 (700-1¾)	1320-2 626 (700-2)

NDB RWY 31

SE-2, 22 OCT 2009 to 19 NOV 2009

SE-2, 22 OCT 2009 to 19 NOV 2009