

ORANGE CITY, IOWA

AL-6328 (FAA)

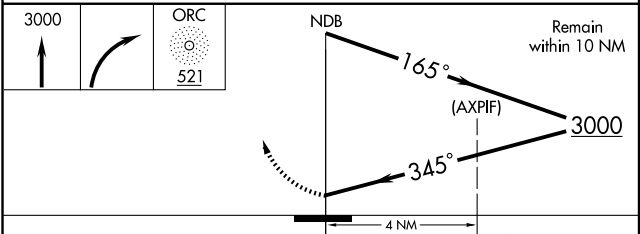
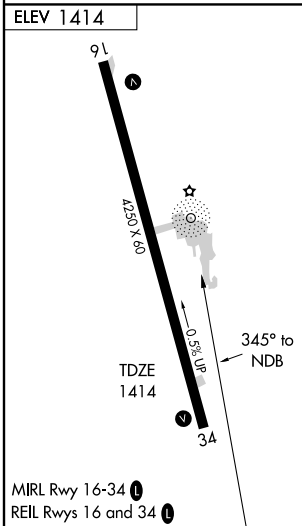
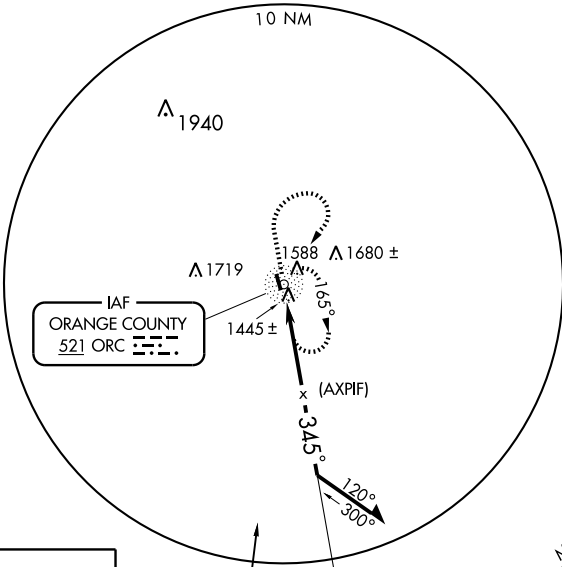
NDB or GPS RWY 34

ORANGE CITY MUNI (ORC)

NDB ORC 521	APP CRS 345°	Rwy Idg TDZE Apt Elev	4250 1414 1414
-----------------------	------------------------	-----------------------------	---

MISSED APPROACH: Climb to 3000 then right turn direct ORC NDB and hold.

AWOS-3 127.825	MINNEAPOLIS CENTER 124.1 269.0	UNICOM 122.8 (CTAF) 0
--------------------------	--	--



CATEGORY	A	B	C	D
S-34	1920-1	506 (600-1)	1920-1½	506 (600-1½)
CIRCLING	1920-1	506 (600-1)	1920-1½ 506 (600-1½)	1980-2 566 (600-2)

ORANGE CITY, IOWA
Amdt 3A 09071

42°59'N-96°04'W

ORANGE CITY MUNI (ORC) NDB or GPS RWY 34

NC-3, 22 OCT 2009 to 19 NOV 2009

NC-3, 22 OCT 2009 to 19 NOV 2009