

RNAV (GPS) RWY 10

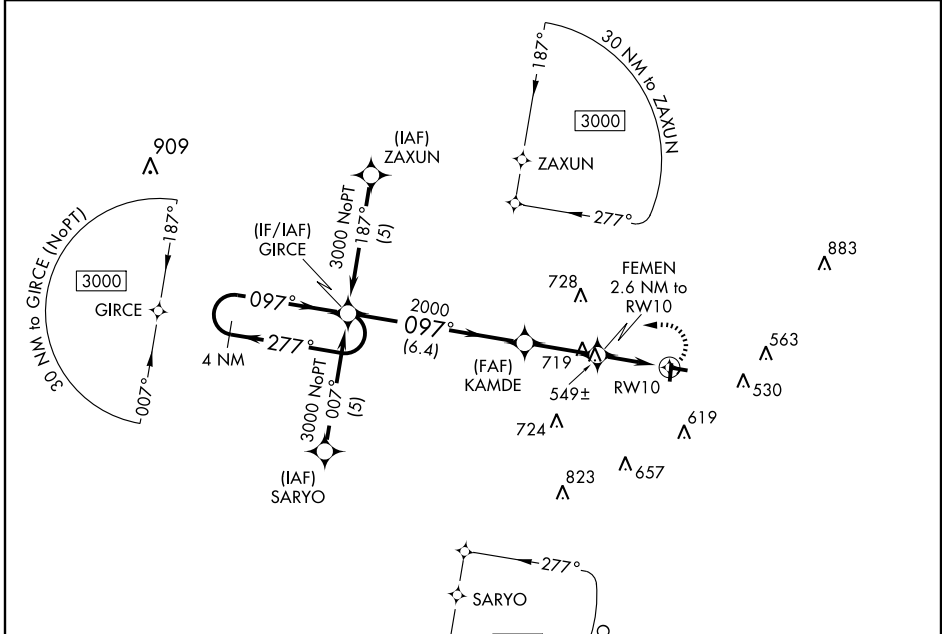
EVERGREEN/ MIDDLETON FIELD (GZH)

| | | |
|-------------|----------|-------------|
| APP CRS | Rwy Idg | 4000 |
| 097° | TDZE | 259 |
| | Apt Elev | 259 |

▼ When VGSI inoperative, procedure NA at night. DME/DME RNP-0.3 NA.
▲ Visibility reduction by helicopters NA. When local altimeter setting not received, use South Alabama Rgnl altimeter setting and increase all MDAs 100 feet, LNAV visibility Cat. C/D ¼ mile, Circling Cat. C ¼ and Cat. D ½ mile.

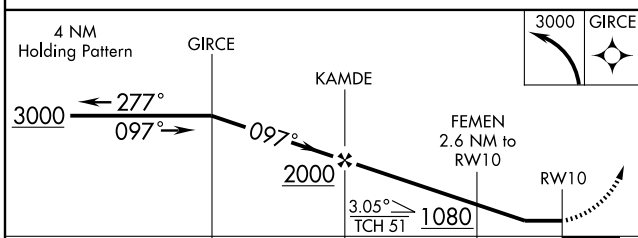
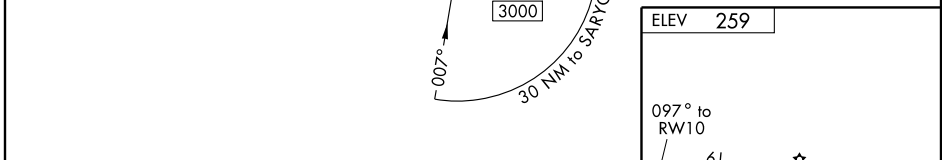
MISSED APPROACH:
 Climbing left turn to 3000 direct GIRCE and hold.

| | | |
|------------------------|---|---------------------------------|
| ASOS 133.425 | JACKSONVILLE CENTER 120.2 346.4 | UNICOM 122.7 (CTAF) 0 |
|------------------------|---|---------------------------------|



SE-4, 22 OCT 2009 to 19 NOV 2009

SE-4, 22 OCT 2009 to 19 NOV 2009



| | |
|------|-----|
| ELEV | 259 |
|------|-----|

The obstacle diagram shows a 4000 x 150 obstacle with a 0.4% UP slope. It is located near RW10. The diagram also shows the 097° heading to RW10 and the TDZE of 259.

| CATEGORY | A | B | C | D |
|----------|-------|-------------|------------------------|------------------------|
| LNAV MDA | 800-1 | 541 (600-1) | 800-1½ 541 (600-1½) | 800-1¾ 541 (600-1¾) |
| CIRCLING | 800-1 | 541 (600-1) | 800-1½ 541 (600-1½) | 920-2 661 (700-2) |

MRL Rwy 1-19 and 10-28 0