

KENTLAND, INDIANA

AL-6325 (FAA)

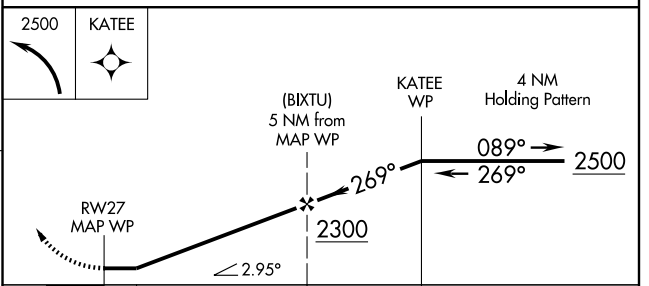
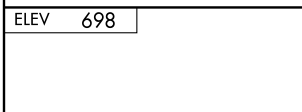
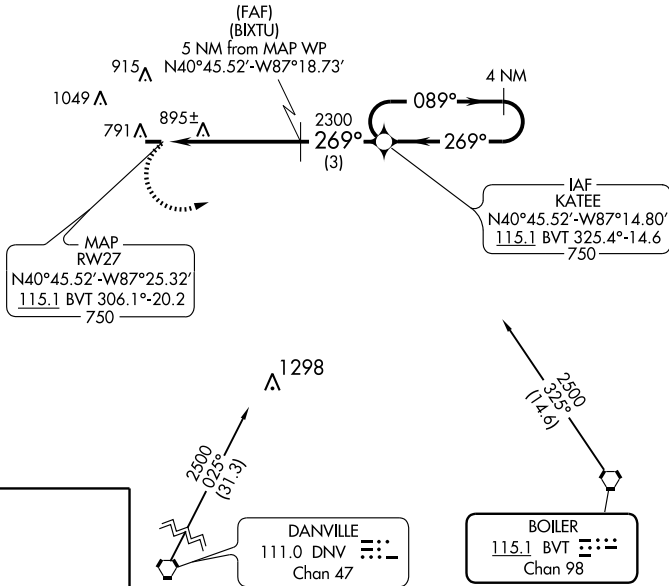
VORTAC BVT 115.1 Chan 98	APP CRS 269°	Rwy Idg 3504 TDZE 698 Apt Elev 698
--	------------------------	---

VOR/DME RNAV or GPS RWY 27

KENTLAND MUNI (50I)

<p>▼ Use Lafayette altimeter setting. ▲ NA</p>	<p>MISSED APPROACH: Climbing left turn to 2500 direct KATEE WP and hold.</p>
--	--

<p>CHICAGO CENTER 132.5 258.1</p>	<p>UNICOM 122.8 (CTAF) 0</p>
--	---



ELEV 698

TDZE 698

3504 X 50

269° to MAP WP

HIRL Rwy 9-27 0
REL Rwy 9 and 27 0

CATEGORY	A	B	C	D
S-27	1280-1	582 (600-1)	1280-1½ 582 (600-1½)	NA
CIRCLING	1280-1	582 (600-1)	1320-1¾ 622 (700-1¾)	NA

KENTLAND, INDIANA
Orig 07130

40°45'N - 87°26'W

KENTLAND MUNI (50I)

VOR/DME RNAV or GPS RWY 27

EC-2, 22 OCT 2009 to 19 NOV 2009

EC-2, 22 OCT 2009 to 19 NOV 2009